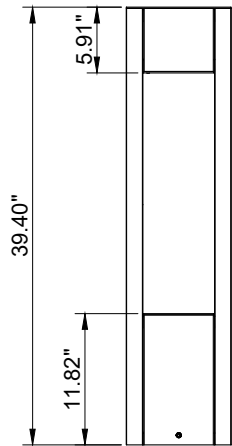
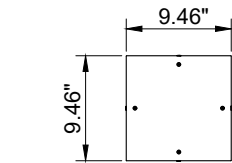


# INSTALLATION AND SERVICE MANUAL

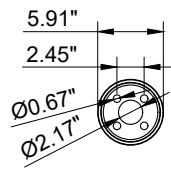
For installation of Vancouver Bollard 9.46"x9.46" and 6.3"x6.3"  
Model. UVA-10001 and UVA-10011

## Product drawing (dimensions)

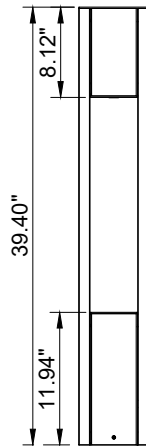
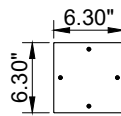
## SUITABLE FOR WET LOCATIONS



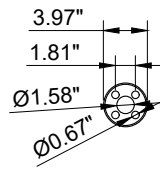
UVA-10001



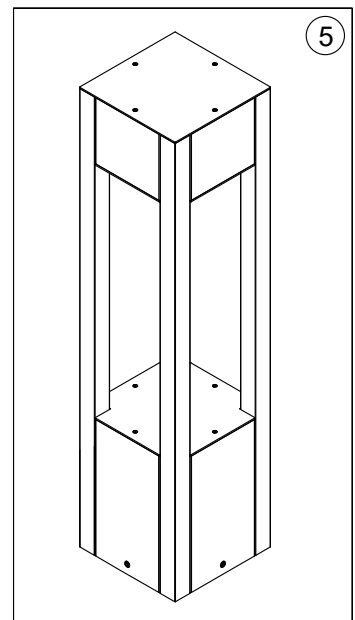
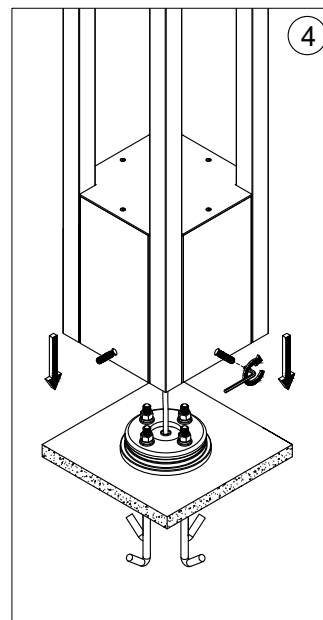
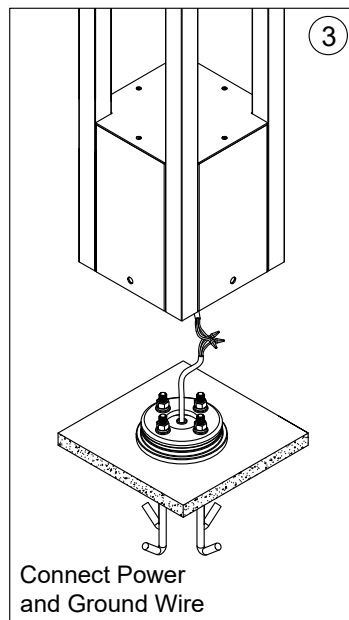
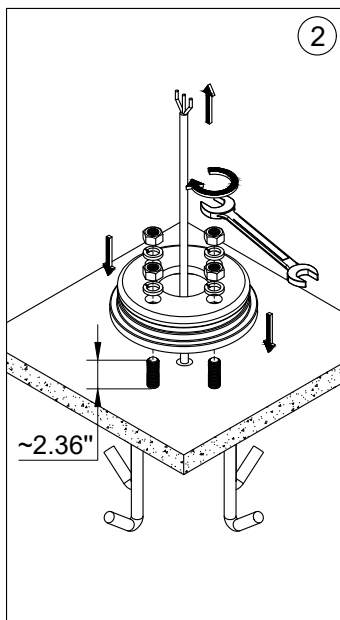
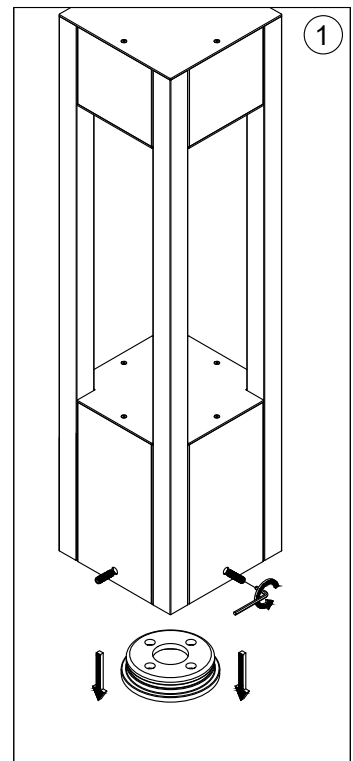
MOUNTING DETAIL



UVA-10011



MOUNTING DETAIL



### Notice to installer :

1. **WIRING INSTRUCTIONS** Warning : RISK OF FIRE AND ELECTRICAL SHOCK. : FIXTURE MUST BE INSTALLED BY A QUALIFIED ELECTRICIAN ONLY>FIXTURE IS INTENDED FOR INSTALLATION IN ACCORDANCE WITH THE NATIONAL ELECTRICAL CODE, LOCAL AND FEDERAL CODE SPECIFICATIONS. DISCONNECT POWER BEFORE SERVICING.
2. This fixture has a **VOLTAGE SPECIFIC BALLAST**, Check that the supply voltage is the same as the installed ballast voltage.

**Ligman Lighting USA**

7144 NE Progress Court, Hillsboro  
Oregon, 97124, USA  
Tel : 503 645 0500 | Fax : 503 645 8100