

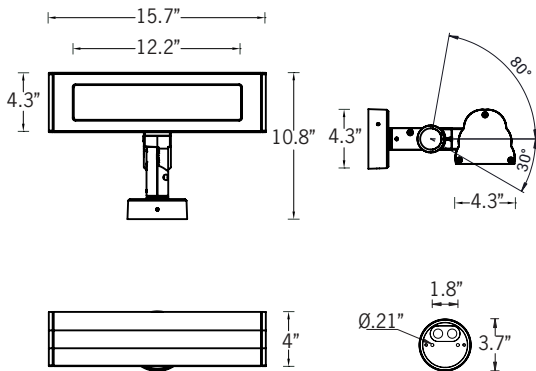
FS-UKWH-30001-RGBW

KWH 1 Surface Sconce & Floodlight



RGBW

47w LED 2513 Lumens
IP65 • Suitable For Wet Locations
IK07 • Impact Resistant
Weight 8.7 lbs



Mounting Detail

Construction

Aluminum

Less than 0.1% copper content - Marine Grade 6060 extruded & LM6 Aluminum High Pressure die casting provides excellent mechanical strength, clean detailed product lines and excellent heat dissipation.

Pre paint

8 step degrease and phosphate process that includes deoxidizing and etching as well as a zinc and nickel phosphate process before product painting.

Memory Retentive -Silicon Gasket

Provided with special injection molded "fit for purpose" long life high temperature memory retentive silicon gaskets. Maintains the gaskets exact profile and seal over years of use and compression.

Thermal management

LM6 Aluminum is used for its excellent mechanical strength and thermal dissipation properties in low and high ambient temperatures. The superior thermal heat sink design by Ligman used in conjunction with the driver, controls thermals below critical temperature range to ensure maximum luminous flux output, as well as providing long LED service life and ensuring less than 10% lumen depreciation at 50,000 hours.

Surge Suppression

Standard 10kv surge suppressor provided with all fixtures.

BUG Rating

B0 - U0 - G0

Finishing

All Ligman products go through an extensive finishing process that includes fettling to improve paint adherence.

Paint

UV Stabilized 4.9Mil thick powder coat paint and baked at 200 Deg C. This process ensures that Ligman products can withstand harsh environments. Rated for use in natatoriums.

Hardware

Provided Hardware is Marine grade 316 Stainless steel.

Anti Seize Screw Holes

Tapped holes are infused with a special anti seize compound designed to prevent seizure of threaded connections, due to electrolysis from heat, corrosive atmospheres and moisture.

Crystal Clear Low Iron Glass Lens

Provided with tempered, impact resistant crystal clear low iron glass ensuring no green glass tinge.

Optics & LED

Precise optic design provides exceptional light control and precise distribution of light. LED CRI > 80

Lumen - Maintenance Life

L80 /B10 at 50,000 hours (This means that at least 90% of the LED still achieve 80% of their original flux)

Clean, slim, surface wall fixtures with class leading performance.

The KWH luminaire provides a small profile luminaire with clean crisp lines and lateral expandability, maintaining a minimalistic uniform visual sideways appearance while offering a variety of lumen packages.

These luminaires have rotatable and interchangeable microVOS optics and are also available with integral emergency battery backup solutions.

Powerful, flexible and cost-effective family with vast array of technical optic choices.

A range of small profile, linear surface wall or ground mounted luminaires with options of upward or downward light distributions. Ideally suited to illuminate the wall and surfaces in front of wall and for light accents on vertical surfaces using high efficiency LED's. The KWH is suitable for indoor and outdoor applications and provides a clean, visually appealing solution for a small, unobtrusive surface mounted luminaire.

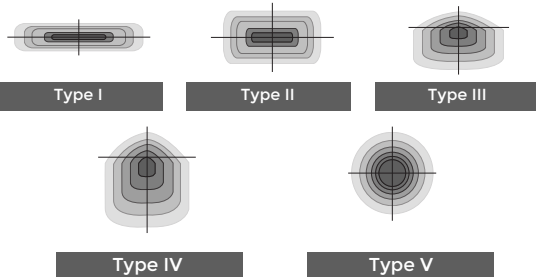
This luminaire is available in 3 different sizes utilizing microVos technology, meaning the ability to do Type I,II,III,IV & V distributions as well as hybrid distributions to suit the designer's requirements.

Using the microVos optics allows for very wide spacing to mounting height ratios, while still providing perfect uniformity and code compliant light levels.

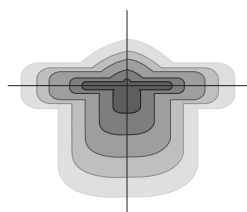
Available with Integral Emergency Backup



Ligman's micro Variable Optical System provides the ability to interchange, mix & rotate optics to provide specific light distributions for optimized spacing and uniformity.



The variable optic system allows for the designer to create hybrid distributions for precise lighting requirements.

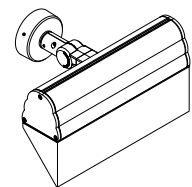


HYBRID
TYPE I & TYPE IV

Additional Options (Consult Factory For Pricing)



TKM
Threaded Knuckle Mount



VIS
Visor

FS-UKWH-30001-RGBW

KWH 1 Surface Sconce & Floodlight



PROJECT					DATE	
QUANTITY		TYPE		NOTE		

ORDERING EXAMPLE || UKWH - 30001 - 48w - T2 - RGBW30 - 02 - 120/277v - Options

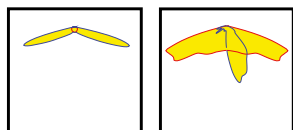
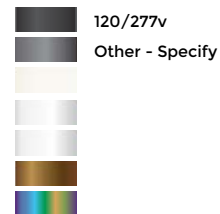
UKWH-30001					
	LAMP	BEAM	RGBW COLOR	FINISH COLOR	VOLTAGE

47w LED
2513 Lumens

- T1 - Type I Distribution
- T2 - Type II Distribution
- T3 - Type III Distribution
- T4 - Type IV Distribution
- M - Medium 31°
- W - Wide 55°
- EW - Extra Wide 107°
- ME - Type ME Distribution
- SCL - Type SCL Distribution

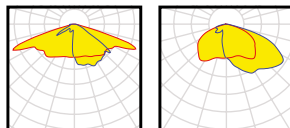
- RGBW30 - Warm White 3200K
- RGBW40 - Neutral White 4000K
- RGBW65 - Cool White 6850K

- 01 - BLACK RAL 9011
- 02 - DARK GREY RAL 7043
- 03 - WHITE RAL 9003
- 04 - METALLIC SILVER RAL 9006
- 05 - MATTE SILVER RAL 9006
- 06 - LIGMAN BRONZE
- 07 - CUSTOM RAL



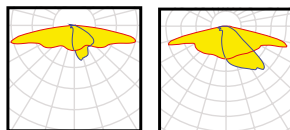
T1
IESNA Type I
(medium)

T2
IESNA Type II
(medium)



T3
IESNA Type III
(medium)

T4
IESNA Type IV



SCL
Type II/III (long), ideal
for pedestrian paths
and residential roads

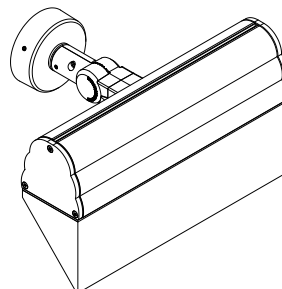
ME
Excellent longitudinal
luminance uniformity
fulfilling EN13201 M-
class requirements

--	--	--

ADDITIONAL OPTIONS

- DIM - 0-10v Dimming
- NAT - Natatorium Rated
- F - Frosted Lens
- EMG - Emergency Battery Backup

- IHSS- Internal House Side Shield
- TKM - Threaded Knuckle Mount
- VIS - Visor



VIS
Visor



KWH Product Family



KWH 1

• UKWH-30001-19w-2591lm



KWH 2

• UKWH-30011-31w-5182lm



KWH 3

• UKWH-30021-60w-7200lm



KWH 4

• UKWH-20001-20w-2591lm



KWH 5

• UKWH-20011-38w-5182lm



KWH 6

• UKWH-20021-60w-7200lm

