



Columbus bollard

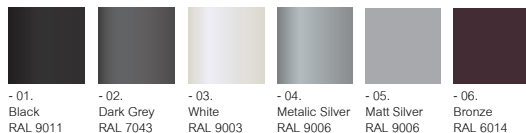
IP55 ✱ ▲ ▲ / EN 60598/CLASS I Ⓢ / ▽ / CE / IK08



Suitable for wet locations

A decorative bollard with a symmetrical light distribution with options of energy saving compact fluorescent, metal halide and high pressure sodium lamps. Developed to complement the Columbus range of pillar light, post top and wall light luminaires. Designed for various applications including entrances, gardens, precincts and pathways. The LED luminaires have features such as long life, limited maintenance and constant lifetime performance.

Extruded aluminum column and low copper content die-cast aluminium housing with high corrosion resistance. Stainless steel screws. Durable silicone rubber gasket and clear or opal impact resistant UV stabilized polycarbonate diffuser. Housing is treated with a chemical chromated protection before powder coating, ensuring high corrosion resistance. Integral control gear Anodized high purity aluminum reflector with the clear diffuser option. The internal control gear is secured in a separate but integral waterproof housing. Maintenance is performed from the top of the luminaire.

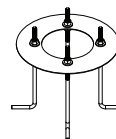


Product Family



Saint Jean Les Deux Jumeaux, France

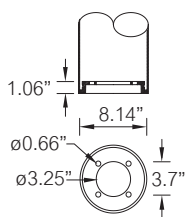
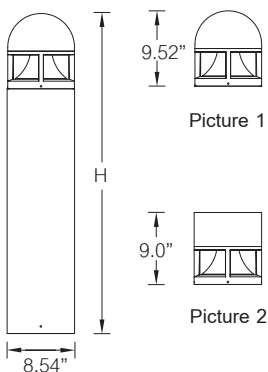
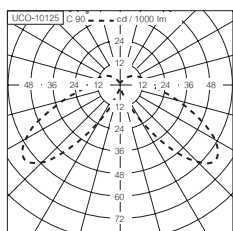
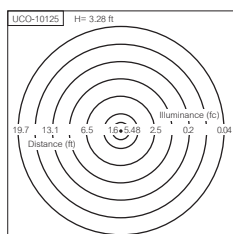
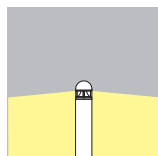
Accessories



Anchor bolt kit for installation
A10491



UCO-10121-1



Mounting detail

Columbus bollard

Model No.	Lamp	Holder	Lumen	Weight	(H) Height	Picture
UCO-10111-1	CFQ 18w.	G24q-2	1075	18.5 lb.	28.5"	1
UCO-10112-1	CFQ 26w.CFTR 32/42w.	Gx24q-3/4	1550/2040/2720	18.7 lb.	28.5"	1
UCO-10113-1	PMH-ED17 50w.	MED	2100	19.6 lb.	28.5"	1
UCO-10114-1	PMH-ED17 70w.	MED	4000	19.6 lb.	28.5"	1
UCO-10115-1	HPS-ED17 50w.	MED	3600	19.4 lb.	28.5"	1
UCO-10116-1	HPS-ED17 70w.	MED	5450	19.4 lb.	28.5"	1
UCO-10111-2	CFQ 18w.	G24q-2	1075	18.5 lb.	27.9"	2
UCO-10112-2	CFQ 26w.CFTR 32/42w.	Gx24q-3/4	1550/2040/2720	18.7 lb.	27.9"	2
UCO-10113-2	PMH-ED17 50w.	MED	2100	19.6 lb.	27.9"	2
UCO-10114-2	PMH-ED17 70w.	MED	4000	19.6 lb.	27.9"	2
UCO-10115-2	HPS-ED17 50w.	MED	3600	19.4 lb.	27.9"	2
UCO-10116-2	HPS-ED17 70w.	MED	5450	19.4 lb.	27.9"	2
UCO-10121-1	CFQ 18w.	G24q-2	1075	25.3 lb.	40.5"	1
UCO-10122-1	CFQ 26w.CFTR 32/42w.	Gx24q-3/4	1550/2040/2720	25.5 lb.	40.5"	1
UCO-10123-1	PMH-ED17 50w.	MED	2100	26.4 lb.	40.5"	1
UCO-10124-1	PMH-ED17 70w.	MED	4000	26.4 lb.	40.5"	1
UCO-10125-1	HPS-ED17 50w.	MED	3600	26.2 lb.	40.5"	1
UCO-10126-1	HPS-ED17 70w.	MED	5450	26.2 lb.	40.5"	1
UCO-10121-2	CFQ 18w.	G24q-2	1075	25.3 lb.	39.9"	2
UCO-10122-2	CFQ 26w.CFTR 32/42w.	Gx24q-3/4	1550/2040/2720	25.5 lb.	39.9"	2
UCO-10123-2	PMH-ED17 50w.	MED	2100	26.4 lb.	39.9"	2
UCO-10124-2	PMH-ED17 70w.	MED	4000	26.4 lb.	39.9"	2
UCO-10125-2	HPS-ED17 50w.	MED	3600	26.2 lb.	39.9"	2
UCO-10126-2	HPS-ED17 70w.	MED	5450	26.2 lb.	39.9"	2

Columbus bollard LED

Model No.	Lamp	Light output	LED colour	Power W	Weight	(H) Height	Picture	Dimmable 1-10v
UCO-10117-1-W27	12 LED	211 lm	2700K	20	18.5 lb.	28.5"	1	•
UCO-10117-1-W30	12 LED	225 lm	3000K	20	18.5 lb.	28.5"	1	•
UCO-10117-1-W40	12 LED	225 lm	4000K	20	18.5 lb.	28.5"	1	•
UCO-10117-2-W27	12 LED	211 lm	2700K	20	18.5 lb.	27.9"	2	•
UCO-10117-2-W30	12 LED	225 lm	3000K	20	18.5 lb.	27.9"	2	•
UCO-10117-2-W40	12 LED	225 lm	4000K	20	18.5 lb.	27.9"	2	•
UCO-10127-1-W27	12 LED	211 lm	2700K	20	25.3 lb.	40.5"	1	•
UCO-10127-1-W30	12 LED	225 lm	3000K	20	25.3 lb.	40.5"	1	•
UCO-10127-1-W40	12 LED	225 lm	4000K	20	25.3 lb.	40.5"	1	•
UCO-10127-2-W27	12 LED	211 lm	2700K	20	25.3 lb.	39.9"	2	•
UCO-10127-2-W30	12 LED	225 lm	3000K	20	25.3 lb.	39.9"	2	•
UCO-10127-2-W40	12 LED	225 lm	4000K	20	25.3 lb.	39.9"	2	•

Columbus Pillar light

Model No.	Lamp	Holder	Lumen	Weight	(H) Height	Picture
UCO-70091-1	CFQ 18w.	G24q-2	1075	25.3 lb.	17.79"	1
UCO-70092-1	CFQ 26w.CFTR 32/42w.	Gx24q-3/4	1550/2040/2720	25.5 lb.	17.79"	1
UCO-70093-1	PMH-ED17 50w.	MED	2100	26.4 lb.	17.79"	1
UCO-70094-1	PMH-ED17 70w.	MED	4000	26.4 lb.	17.79"	1
UCO-70095-1	HPS-ED17 50w.	MED	3600	26.2 lb.	17.79"	1
UCO-70096-1	HPS-ED17 70w.	MED	5450	26.2 lb.	17.79"	1
UCO-70091-2	CFQ 18w.	G24q-2	1075	25.3 lb.	17.28"	2
UCO-70092-2	CFQ 26w.CFTR 32/42w.	Gx24q-3/4	1550/2040/2720	25.5 lb.	17.28"	2
UCO-70093-2	PMH-ED17 50w.	MED	2100	26.4 lb.	17.28"	2
UCO-70094-2	PMH-ED17 70w.	MED	4000	26.4 lb.	17.28"	2
UCO-70095-2	HPS-ED17 50w.	MED	3600	26.2 lb.	17.28"	2
UCO-70096-2	HPS-ED17 70w.	MED	5450	26.2 lb.	17.28"	2

Columbus Pillar light LED

Model No.	Lamp	Light output	LED colour	Power W	Weight	(H) Height	Picture	Dimmable 1-10v
UCO-70097-1-W27	12 LED	211 lm	2700K	20	25.3 lb.	17.79"	1	•
UCO-70097-1-W30	12 LED	225 lm	3000K	20	25.3 lb.	17.79"	1	•
UCO-70097-1-W40	12 LED	225 lm	4000K	20	25.3 lb.	17.79"	1	•
UCO-70097-2-W27	12 LED	211 lm	2700K	20	25.3 lb.	17.28"	2	•
UCO-70097-2-W30	12 LED	225 lm	3000K	20	25.3 lb.	17.28"	2	•
UCO-70097-2-W40	12 LED	225 lm	4000K	20	25.3 lb.	17.28"	2	•



(1) Dome top



(2) Flat top