

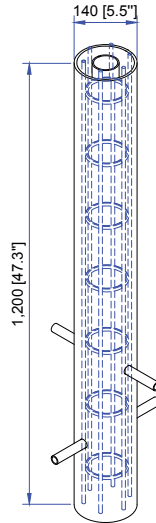
For Installation of K4-Rated Security Bollard For Taurus Bollard

Product drawing (dimensions)

NOTE

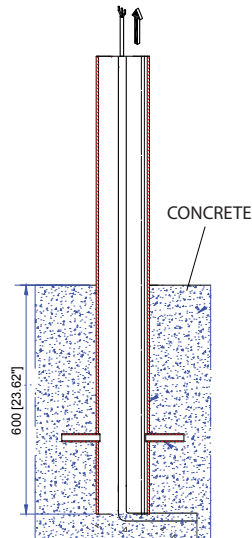
Ground densities vary from site to site. Ligman highly recommends consulting engineers familiar with the building site conditions to establish proper concrete foundation. It is the engineers responsibility to ensure that the foundation is suitable for the bollard application.

(Ligman is not responsible for inadequate foundation failure, the above suggestion should be verified by an engineer familiar with the soil conditions on site)



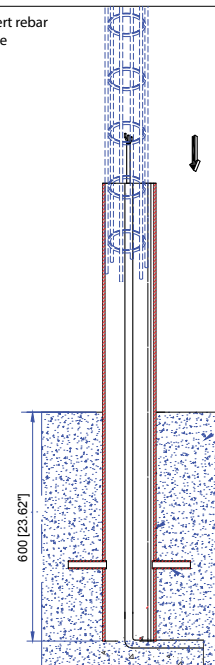
Install security bollard shaft in accordance with engineer instructions

1



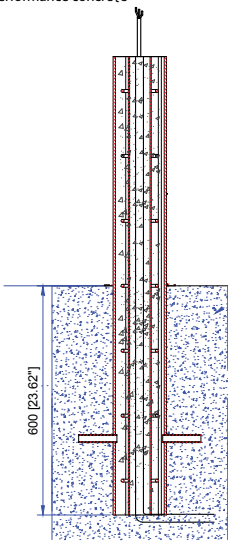
Insert rebar cage

2

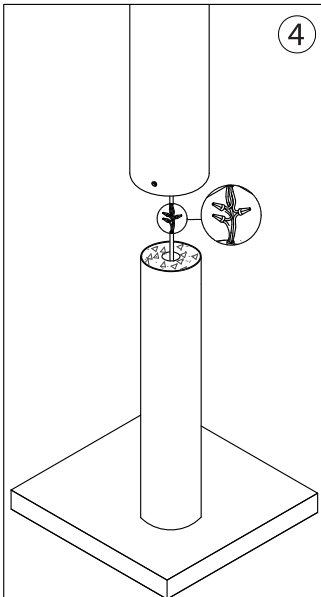


Fill shaft with Portland Ultra-high performance concrete

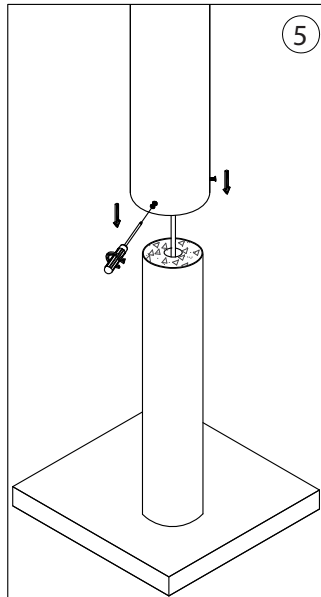
3



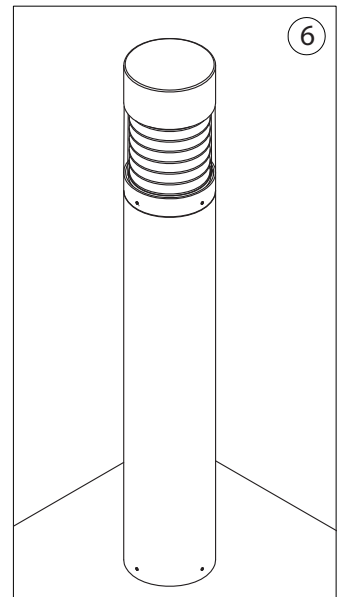
4



5



6



Notice to installer :

1. **WIRING INSTRUCTIONS** Warning : RISK OF FIRE AND ELECTRICAL SHOCK. : FIXTURE MUST BE INSTALLED BY A QUALIFIED ELECTRICIAN ONLY>FIXTURE IS INTENDED FOR INSTALLATION IN ACCORDANCE WITH THE NATIONAL ELECTRICAL CODE, LOCAL AND FEDERAL CODE SPECIFICATIONS. DISCONNECT POWER BEFORE SERVICING.
2. This fixture has a **VOLTAGE SPECIFIC BALLAST**, Check that the supply voltage is the same as the installed ballast voltage.

Ligman Lighting USA

7144 NE Progress Court, Hillsboro
Oregon, 97124, USA
Tel : 503 645 0500 | Fax : 503 645 8100

www.ligmanlightingusa.com