

#### Luminaire

Code UVK-30001-EW-W40  
Name Vektor Medium wall washer 12 LED

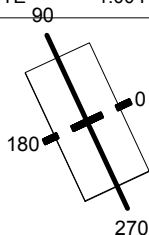
#### Measurem.

Code LIGMAN  
Name Vektor Medium wall washer 12 LED

|                            |            |                 |           |                             |                 |                    |                    |
|----------------------------|------------|-----------------|-----------|-----------------------------|-----------------|--------------------|--------------------|
| Luminaire Flux             | 1828.72 lm | Luminaire Power | 20.40 W   | Efficacy                    | 89.64 lm/W      | Efficiency         | 100.00%            |
| Lamps Flux                 | 1828.72 lm | Maximum value   | 635.40 cd | Position                    | C=45.00 G=50.00 | CG                 | Double Symmetrical |
| Rectangular Luminaire      |            | Length          | 200 mm    | Width                       | 100 mm          | Height             | 1 mm               |
| Rectangular Luminous Area  |            | Length          | 200 mm    | Width                       | 100 mm          | Height             | 0 mm               |
| Horizontal Luminous Area   |            | 0.020000 m2     |           | Emitting area on Plane 180° |                 | 0.000000 m2        |                    |
| Emitting area on Plane 0°  |            | 0.000000 m2     |           | Emitting area on Plane 270° |                 | 0.000000 m2        |                    |
| Emitting area on Plane 90° |            | 0.000000 m2     |           | Glare area at 76°           |                 | 0.004838 m2        |                    |
| Coordinate system          |            | CG              |           | Symmetry Type               |                 | Double Symmetrical |                    |
| Date                       |            | 29-06-2015      |           | Maximum Gamma Angle         |                 | 90                 |                    |
| Measurement Distance       |            | 0.00            |           | Measurement Flux            |                 | 1828.72 lm         |                    |
| Operator                   |            |                 |           | Source voltage              |                 |                    |                    |
| Temperature                |            | 25.00 °C        |           | Source current              |                 |                    |                    |
| Humidity                   |            | 60.00 %         |           | Photocell                   |                 |                    |                    |
| Notes                      |            |                 |           |                             |                 |                    |                    |

| Line | Code             | Luminaire Lamps                | Flux [lm] | Pow. [W] | Q.ty |
|------|------------------|--------------------------------|-----------|----------|------|
|      | UVK-30001-EW-W40 | Name<br>12 LED 4000K - 20.40 W | 1828.72   | 20.40    | 1    |

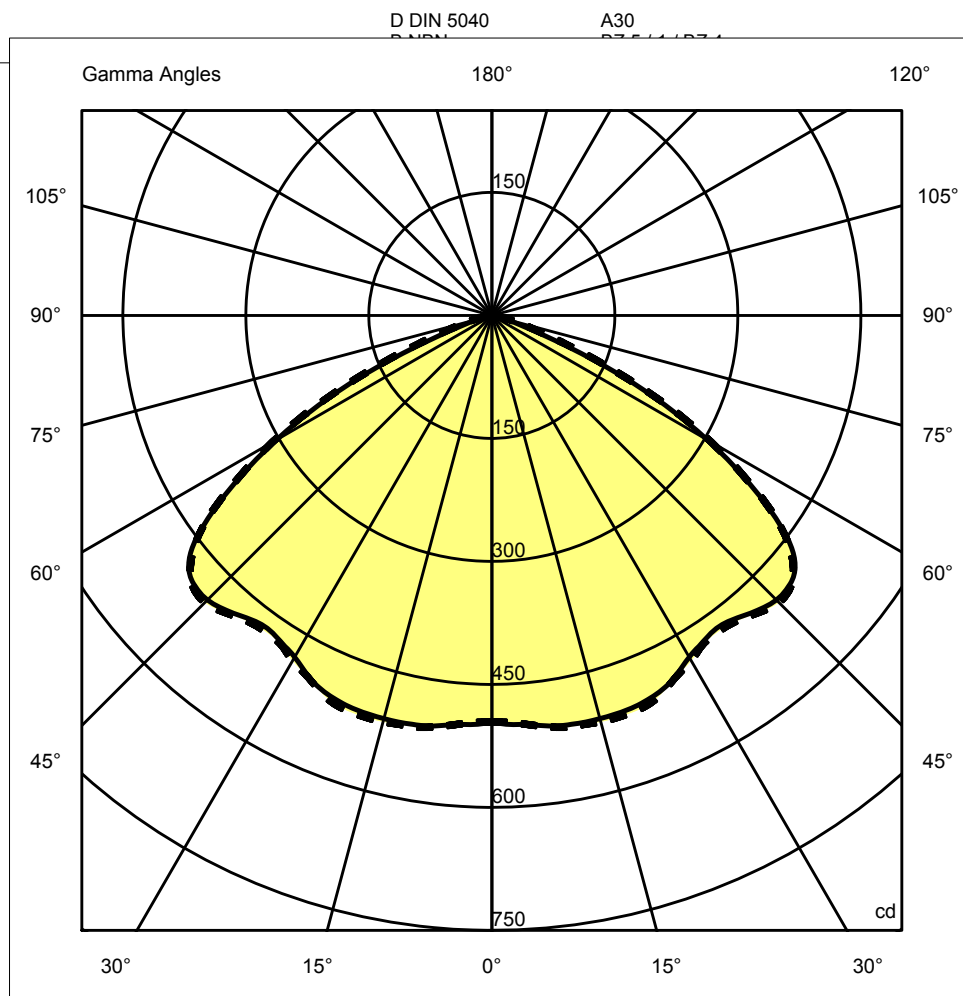
200mm x 100mm  
C.I.E.  
F UTE 44 86 99 100 100  
1.00 F



C Halfplanes

180.0 - - - - - 0.0  
270.0 ——— 90.0

ULOR 0.00 %  
DLOR 100.00 %  
RN 0.00 %



#### Luminaire

Code UVK-30001-EW-W40

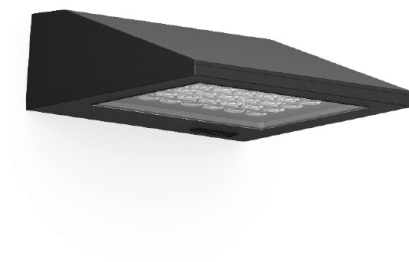
Name Vekter Medium wall washer 12 LED

#### Measurment.

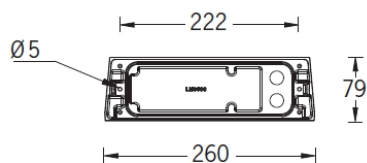
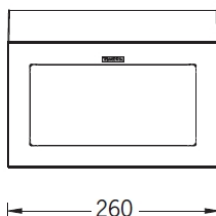
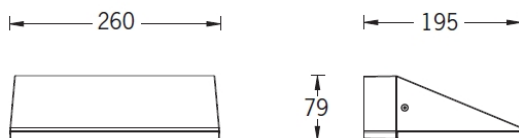
Code LIGMAN

Name Vekter Medium wall washer 12 LED

|                |            |                 |           |          |                 |            |                    |
|----------------|------------|-----------------|-----------|----------|-----------------|------------|--------------------|
| Luminaire Flux | 1828.72 lm | Luminaire Power | 20.40 W   | Efficacy | 89.64 lm/W      | Efficiency | 100.00%            |
| Lamps Flux     | 1828.72 lm | Maximum value   | 635.40 cd | Position | C=45.00 G=50.00 | CG         | Double Symmetrical |



#### VEKTER 1



Mounting detail  
*Instructions de montage*

**Luminaire**

Code UVK-30001-EW-W40  
Name Vektor Medium wall washer 12 LED

**Measurement**

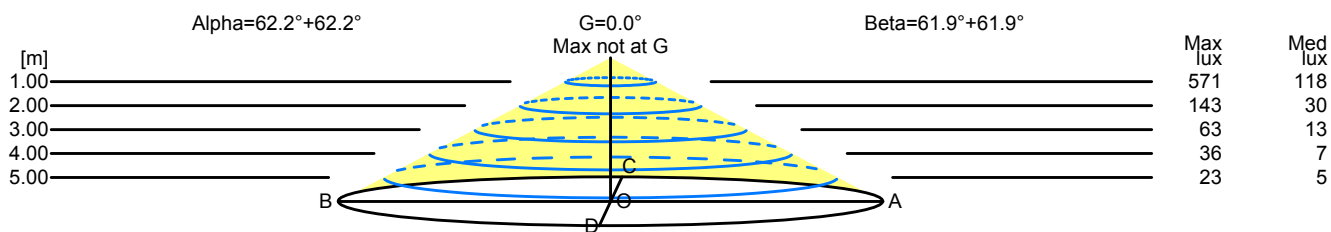
Code LIGMAN  
Name Vektor Medium wall washer 12 LED

|                |            |                 |           |          |                 |            |                    |
|----------------|------------|-----------------|-----------|----------|-----------------|------------|--------------------|
| Luminaire Flux | 1828.72 lm | Luminaire Power | 20.40 W   | Efficacy | 89.64 lm/W      | Efficiency | 100.00%            |
| Lamps Flux     | 1828.72 lm | Maximum value   | 635.40 cd | Position | C=45.00 G=50.00 | CG         | Double Symmetrical |

Width at 50.00 % of Max Intensity

|      |      |      |      |      |      |      |      |      |      |      |      |
|------|------|------|------|------|------|------|------|------|------|------|------|
| H[m] | 1.00 | 2.00 | 3.00 | 4.00 | 5.00 | H[m] | 1.00 | 2.00 | 3.00 | 4.00 | 5.00 |
| OA   | 1.90 | 3.79 | 5.69 | 7.58 | 9.48 | OC   | 1.87 | 3.74 | 5.61 | 7.48 | 9.35 |
| OB   | 1.90 | 3.79 | 5.69 | 7.58 | 9.48 | OD   | 1.87 | 3.74 | 5.61 | 7.48 | 9.35 |

|    |                             |        |        |        |        |        |        |        |       |      |
|----|-----------------------------|--------|--------|--------|--------|--------|--------|--------|-------|------|
|    | Luminous Intensities [ cd ] |        |        |        |        |        |        |        |       |      |
|    | 0                           | 5      | 15     | 25     | 35     | 45     | 55     | 65     | 75    | 85   |
| OA | 495.80                      | 500.90 | 513.30 | 502.50 | 474.30 | 495.20 | 416.50 | 183.30 | 31.40 | 1.90 |
| OB | 495.80                      | 500.90 | 513.30 | 502.50 | 474.30 | 495.20 | 416.50 | 183.30 | 31.40 | 1.90 |
| OC | 495.80                      | 500.60 | 509.00 | 500.20 | 470.10 | 490.70 | 415.00 | 176.00 | 18.50 | 0.90 |
| OD | 495.80                      | 500.60 | 509.00 | 500.20 | 470.10 | 490.70 | 415.00 | 176.00 | 18.50 | 0.90 |



| H[m] | D[m]  | Max lux | Med lux | Alpha=62.2°+62.2° | G=0.0°<br>Max not at G |  |
|------|-------|---------|---------|-------------------|------------------------|--|
| 1.00 | 3.79  | 571     | 118     |                   |                        |  |
| 2.00 | 7.58  | 143     | 30      |                   |                        |  |
| 3.00 | 11.37 | 63      | 13      |                   |                        |  |
| 4.00 | 15.16 | 36      | 7       |                   |                        |  |
| 5.00 | 18.96 | 23      | 5       |                   |                        |  |

| H[m] | D[m]  | Max lux | Med lux | Beta=61.9°+61.9° | G=0.0°<br>Max not at G |  |
|------|-------|---------|---------|------------------|------------------------|--|
| 1.00 | 3.74  | 571     | 118     |                  |                        |  |
| 2.00 | 7.48  | 143     | 30      |                  |                        |  |
| 3.00 | 11.22 | 63      | 13      |                  |                        |  |
| 4.00 | 14.96 | 36      | 7       |                  |                        |  |
| 5.00 | 18.71 | 23      | 5       |                  |                        |  |

**Luminaire**

Code UVK-30001-EW-W40  
Name Vektor Medium wall washer 12 LED

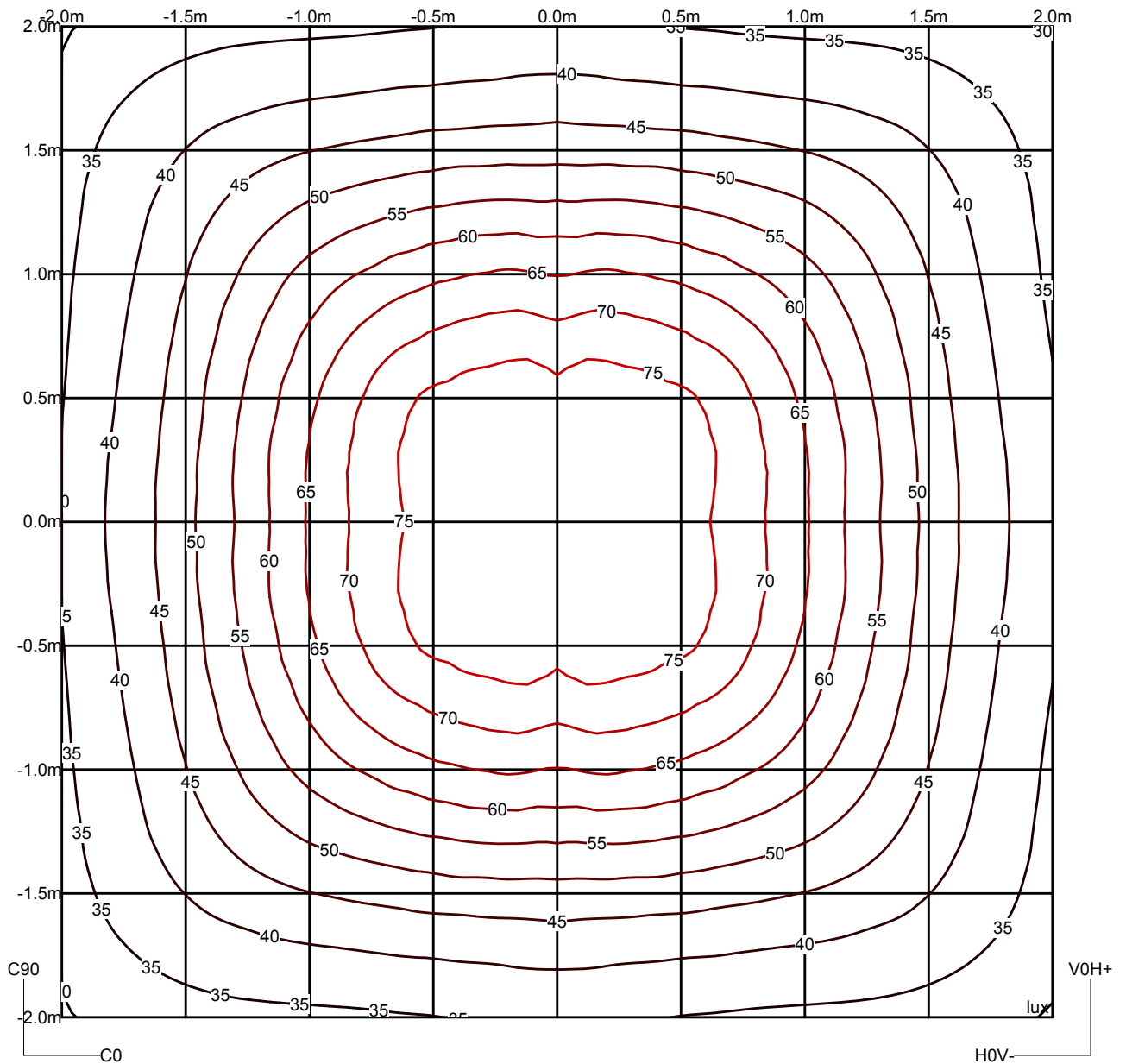
**Measurem.**

Code LIGMAN  
Name Vektor Medium wall washer 12 LED

|                |            |                 |           |          |                 |            |                    |
|----------------|------------|-----------------|-----------|----------|-----------------|------------|--------------------|
| Luminaire Flux | 1828.72 lm | Luminaire Power | 20.40 W   | Efficacy | 89.64 lm/W      | Efficiency | 100.00%            |
| Lamps Flux     | 1828.72 lm | Maximum value   | 635.40 cd | Position | C=45.00 G=50.00 | CG         | Double Symmetrical |

Isolux (Floor)

Luminaire position X=0.00m Y=0.00m Z=2.50m



**Luminaire**

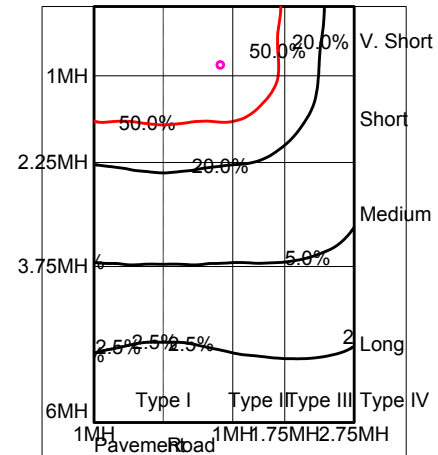
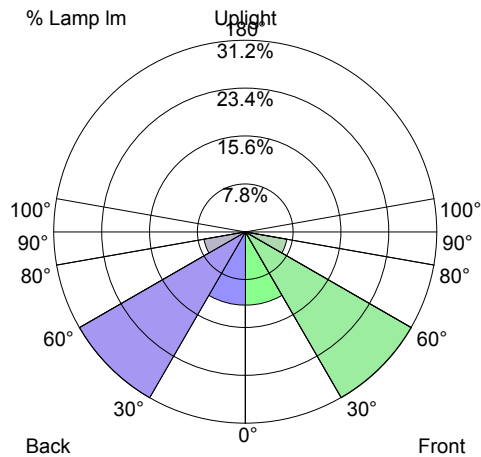
Code UVK-30001-EW-W40  
Name Vekter Medium wall washer 12 LED

**Measurem.**

Code LIGMAN  
Name Vekter Medium wall washer 12 LED

|                |            |                 |           |          |                 |            |                    |
|----------------|------------|-----------------|-----------|----------|-----------------|------------|--------------------|
| Luminaire Flux | 1828.72 lm | Luminaire Power | 20.40 W   | Efficacy | 89.64 lm/W      | Efficiency | 100.00%            |
| Lamps Flux     | 1828.72 lm | Maximum value   | 635.40 cd | Position | C=45.00 G=50.00 | CG         | Double Symmetrical |

US ROAD STANDARDS



| Luminaire Classification System (LCS)                  |              |           |         |         |
|--|--------------|-----------|---------|---------|
| LCS Zone   |              | Lumens    | %Lamp   | %Lum    |
| FL   | 0° -- 30°    | 217.9 lm  | 11.9 %  | 11.9 %  |
| FM   | 30° -- 60°   | 569.7 lm  | 31.2 %  | 31.2 %  |
| FH   | 60° -- 80°   | 125.2 lm  | 6.8 %   | 6.8 %   |
| FVH  | 80° -- 90°   | 1.5 lm    | 0.1 %   | 0.1 %   |
| BL   | 0° -- 30°    | 217.9 lm  | 11.9 %  | 11.9 %  |
| BM   | 30° -- 60°   | 569.7 lm  | 31.2 %  | 31.2 %  |
| BH   | 60° -- 80°   | 125.2 lm  | 6.8 %   | 6.8 %   |
| BVH  | 80° -- 90°   | 1.5 lm    | 0.1 %   | 0.1 %   |
| UL   | 90° -- 100°  | 0.0 lm    | 0.0 %   | 0.0 %   |
| UH   | 100° -- 180° | 0.0 lm    | 0.0 %   | 0.0 %   |
| TOTALS   |              | 1828.7 lm | 100.0 % | 100.0 % |
| BUG B1 U0 G0 Type VS Very Short Quadrilateral Symmetry |              |           |         |         |