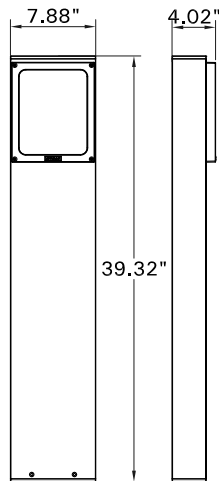


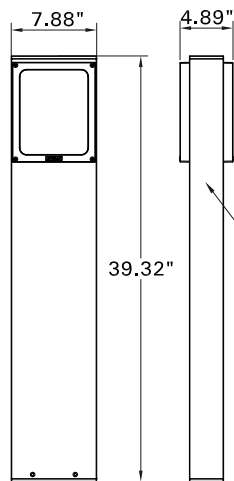
For installation of Light Linear VT One Side And Two Side Bollard.  
Model. UVT-10001, UVT-10002, UVT-10011 and UVT-10012.

## Product drawing (dimensions)

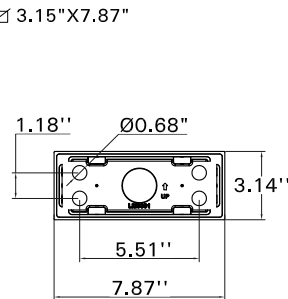
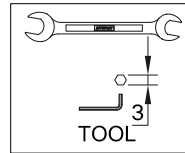
## SUITABLE FOR WET LOCATIONS



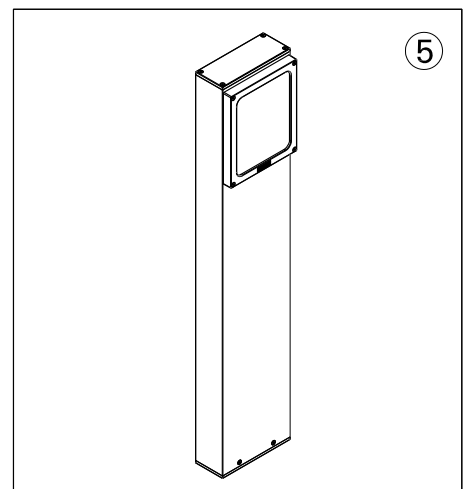
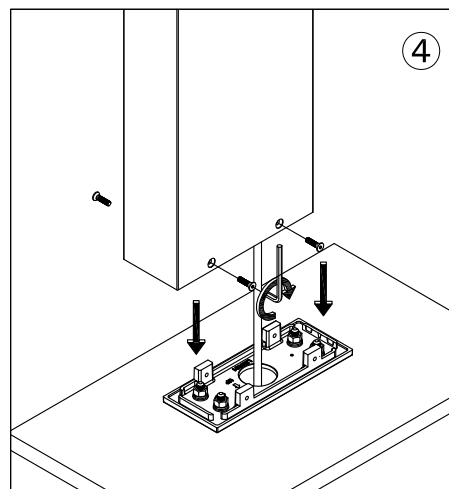
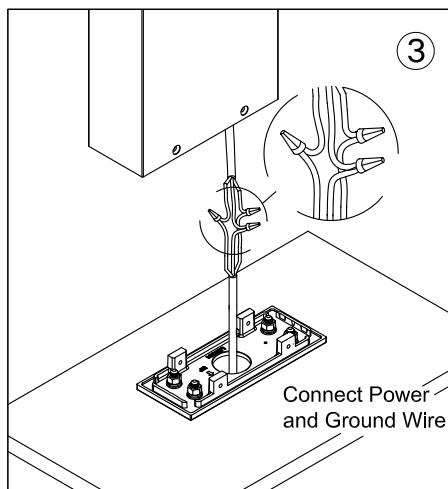
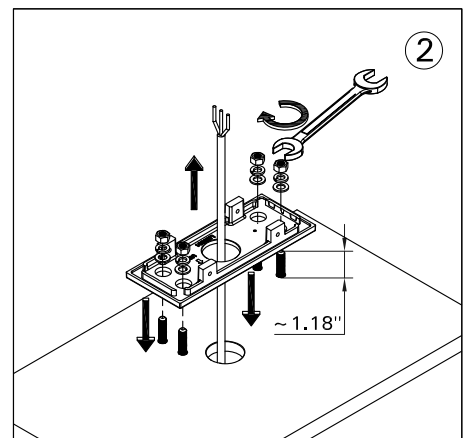
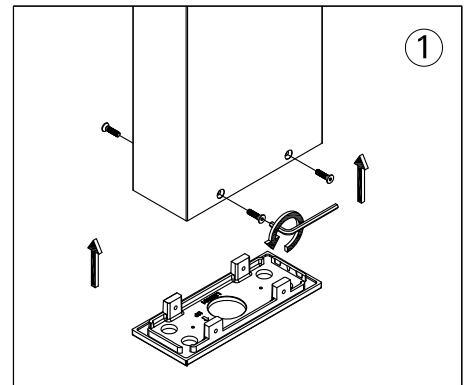
UVT-10001-02



UVT-10011-12



MOUNTING DETAIL



### Notice to installer :

1. **WIRING INSTRUCTIONS** Warning : RISK OF FIRE AND ELECTRICAL SHOCK. : FIXTURE MUST BE INSTALLED BY A QUALIFIED ELECTRICIAN ONLY>FIXTURE IS INTENDED FOR INSTALLATION IN ACCORDANCE WITH THE NATIONAL ELECTRICAL CODE, LOCAL AND FEDERAL CODE SPECIFICATIONS. DISCONNECT POWER BEFORE SERVICING.
2. This fixture has a **VOLTAGE SPECIFIC BALLAST**, Check that the supply voltage is the same as the installed ballast voltage.

**Ligman Lighting USA**

7144 NE Progress Court, Hillsboro  
Oregon, 97124, USA  
Tel : 503 645 0500 | Fax : 503 645 8100

[www.ligmanlightingusa.com](http://www.ligmanlightingusa.com)

UVT-10001 08/09/17/REV.A KIE  
1/1

FM-TS-13-2/15-03-2561/Rev.3