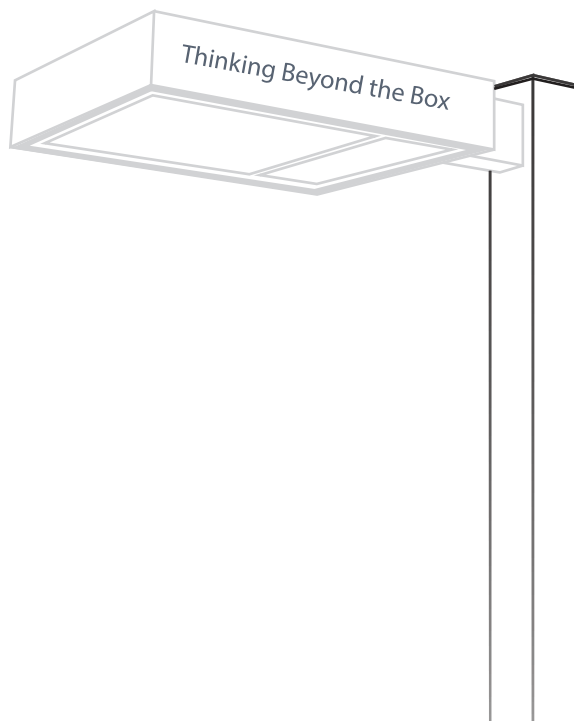




LIGHT LINEAR VT REVOLUTION

- Low Glare Ratings
- Precise uplight control
- Optimized spacing to mounting height ratios using specially developed optical system.
- Type I, II, III & IV distributions.
- Type V floodlight distribution for facade illumination.
- Selection of lumen packages.
- Specifiable pole heights to suit project requirements.
- Fully assembled and pre-wired for fast installation.
- Low EPA for high wind zones.
- Patent Pending



Light Linear VT is an elegant futuristic lighting column and bollard range that is suitable for both modern and classic architecture. Ideal for creating optical guidance with exceptional visual comfort.

This lighting column has been developed by Ligman to provide optimal lighting distributions without utilizing traditional outreach arms or fixture heads and in so doing, provides a highly aesthetic and cost effective alternative to traditional street and area lighting options without sky clutter. This fixture is manufactured in both single sided, and double sided versions.

Watts

55w | 78w | 110w | 156w | 2x55w

Types

Type I, II, III & IV Distributions

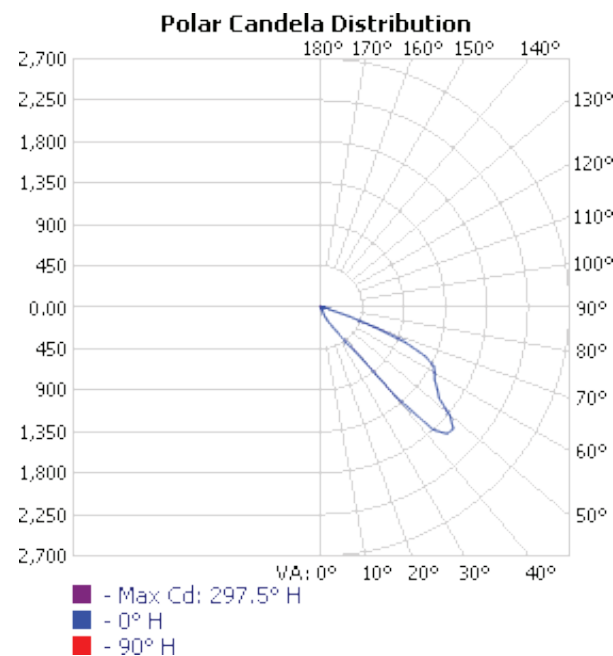
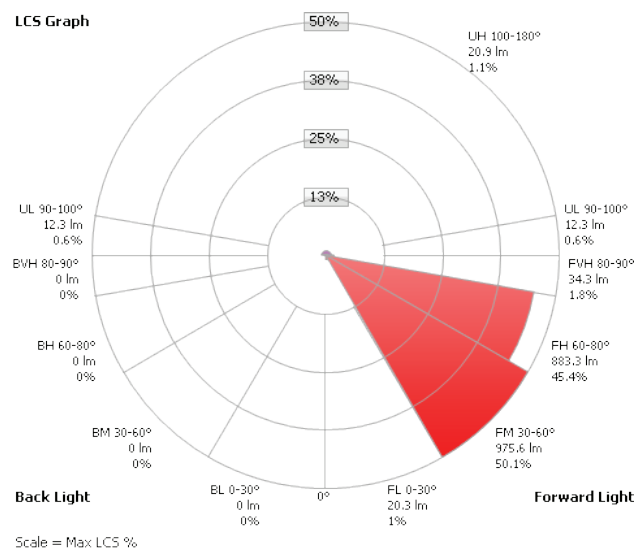
Floodlights

Type V - Narrow, Medium & Wide Beams



60ft on center spacings - zero backlight

The Light Linear VT is designed with specially developed optics that provide Type I, II, III & IV distributions, incorporating an innovative **Low Glare Optical System** that ensures the light is properly utilized and evenly distributed according to the type distribution required while addressing wasted uplight concerns. IDA - International Dark Sky Approved options are available (2700K & 3000K).



Example - Type III Distribution - 55w

The Light Linear VT is available with a specially designed Dark Sky optical system that provides distributions that are compliant with IDA requirements.



2700K & 3000K color temperatures only
DKS Options on specification sheet.



Utilizing an advanced design light control optical system with integrated heat sink allows this product to be installed up to 60 ft on center with excellent uniformity, saving on installation costs and removing visual clutter in parking lots, streets and pedestrian areas. Available in a variety of different light distributions and has lumen packages from 3,658 to 11,541 lumens depending on product specification.

The LED optics have been carefully designed in such a way to ensure that light is evenly projected downward, with strict uplight control that optimizes light distribution and providing light patterns at maximum spacing in accordance with road and area lighting requirements.

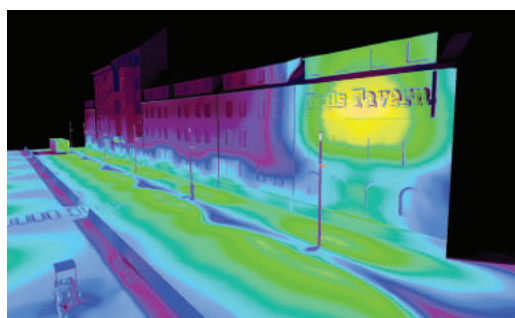
An additional feature of this product is that there is zero backlight, thereby eliminating light trespass issues.

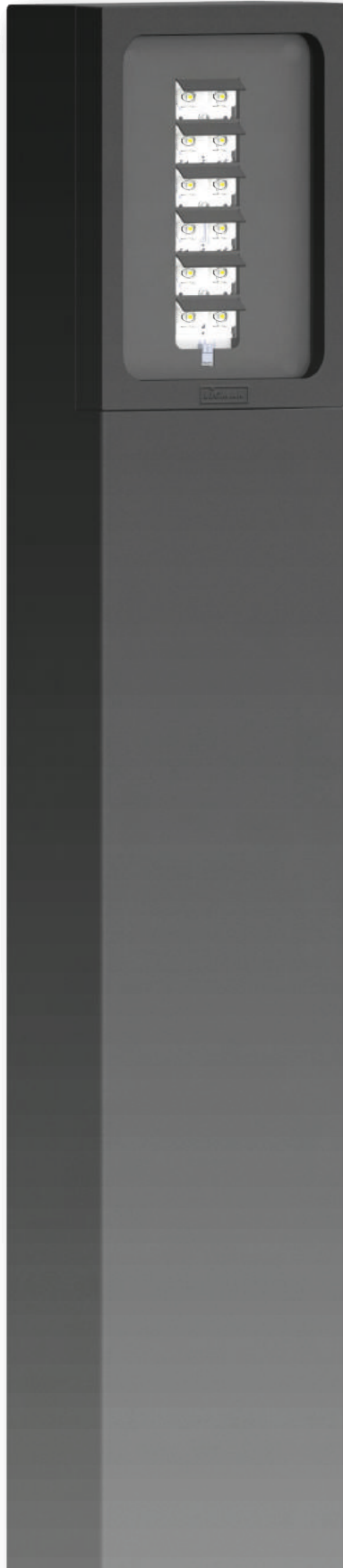
Delivered fully assembled with fixture head and wiring to the handhole, ensuring quick installation without the necessity of having to attach the fixture head or outreach arms.

The IP65 rated dual sealed optical chamber, with integrated heat sinks, houses a range of field interchangeable optically controlled LEDs, providing Type I, II, III & IV distribution, as well as variations of this for precise light distribution requirements. The optional floodlighting accessory, allows the utilization of 'one' fixture for both area lighting and floodlighting applications.

Design Suggestion :

Utilize one side of the fixture with type I optics for streetlighting & the other side type V - wide beam floodlight for building facade illumination.



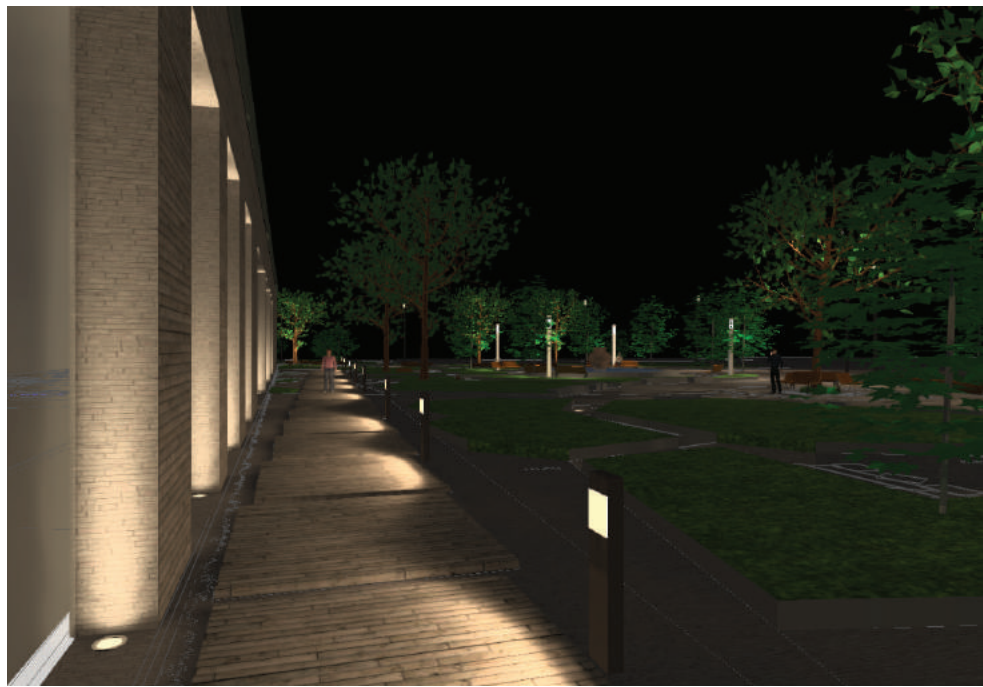


The sleek and minimalistic shape provides effective lighting at night and decorative urban effects during the day.

This product range is complemented with high performance optics in the bollard and wall mounted luminaires, to provide a consistent range of design aesthetics for the project. See website for more information. Poles can be provided with GFCI boxes positioned to specific heights specified by the designer. A flat low profile hand hole cover with vandal resistant screws is provided for easy installation and maintenance.

An array of control electronics, including; integral electronic drivers and dimming drivers, provisions for wireless lighting controls to integrate with building management systems and pole mounted occupancy sensors is available. [Contact the factory for more information]

BOLLARD





Options

- Lightly Frosted Lens
- Integrated GFCI Box
- Occupancy Sensors
- Wireless Lighting Controls
- Photocell
- 0-10v Dimming
- Custom pole heights to suit design requirments
- Dark Sky Optics (Available)
- Bird Spike

Product	Watts	Lumens	Type
One Side			
UVT-20001	55w	3658lm	Type I
UVT-20001	55w	4323lm	Type II
UVT-20001	55w	4155lm	Type III
UVT-20001	55w	4341lm	Type IV
UVT-20002	78w	4912lm	Type I
UVT-20002	78w	5805lm	Type II
UVT-20002	78w	5579lm	Type III
UVT-20002	78w	5829lm	Type IV
UVT-20003	110w	7206lm	Type I
UVT-20003	110w	8516lm	Type II
UVT-20003	110w	8185lm	Type III
UVT-20003	110w	8552lm	Type IV
UVT-20004	156w	9725lm	Type I
UVT-20004	156w	11492lm	Type II
UVT-20004	156w	11045lm	Type III
UVT-20004	156w	11541lm	Type IV

Two Side			
UVT-20011	2x55w	2x3658lm	Type I
UVT-20011	2x55w	2x4323lm	Type II
UVT-20011	2x55w	2x4155lm	Type III
UVT-20011	2x55w	2x4341lm	Type IV

* All products available in type V distribution N, M, W Beam



7144 NW Progress Court
Hillsboro, Oregon 97124
Phone | 503.645.0500 |

