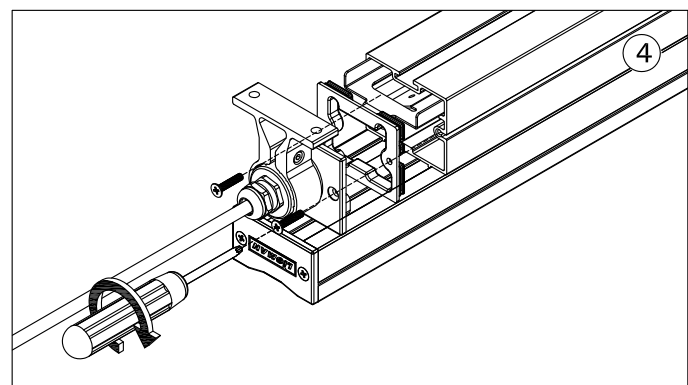
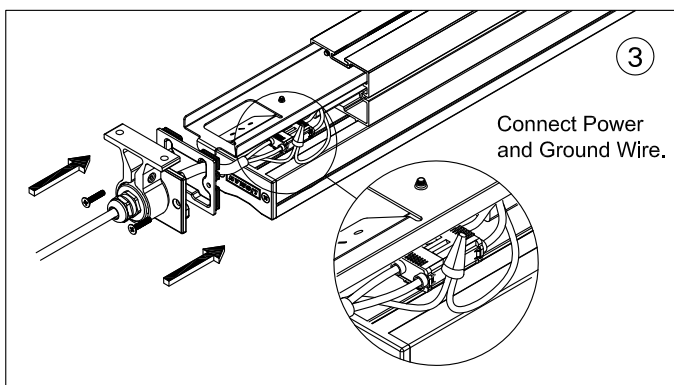
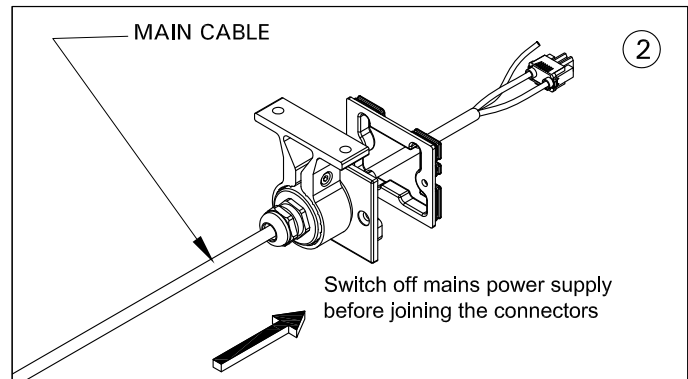
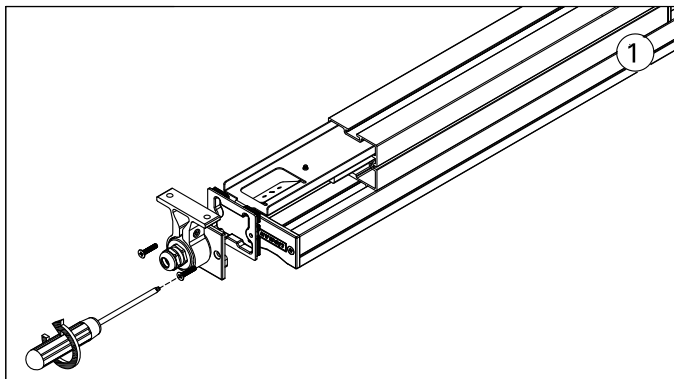
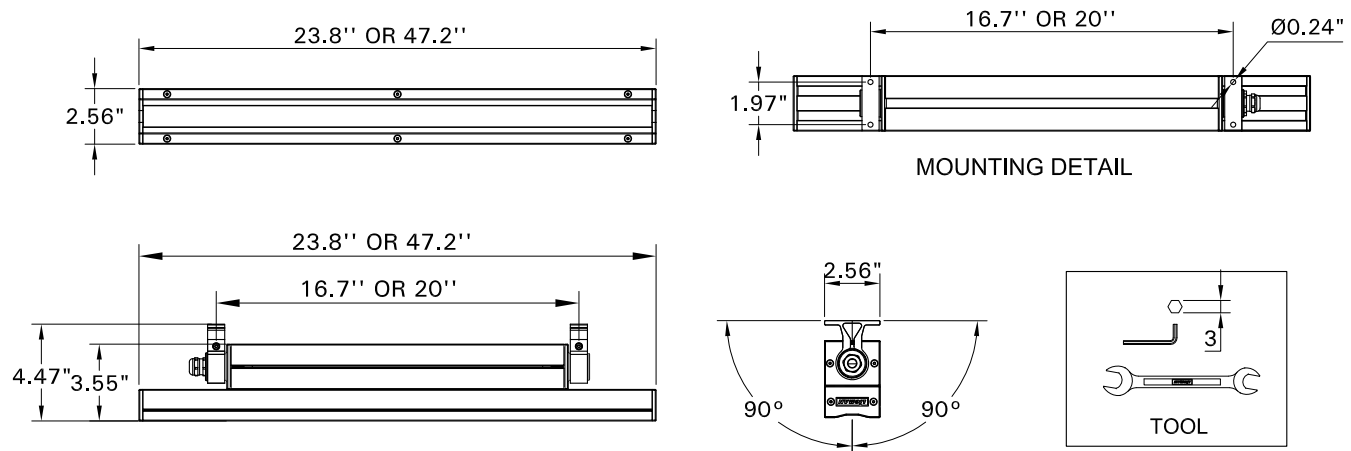


INSTALLATION AND SERVICE MANUAL

LIGMAN
LIGHTING USA

For installation of Light Linear LA wall washer.

Product drawing (dimensions) SUITABLE FOR WET LOCATIONS



Ligman RGBW/DMX & 0-10v dimming fixtures are provided with 5 wire, underwater rated 600v SO power cord. This consists of hot, neutral and ground, as well as twisted, shielded DMX +, DMX - and ground wire.

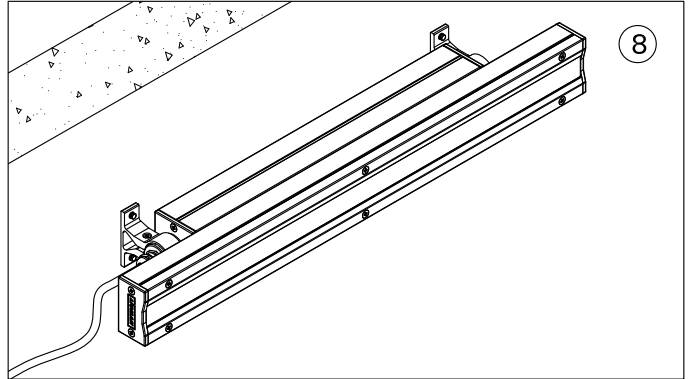
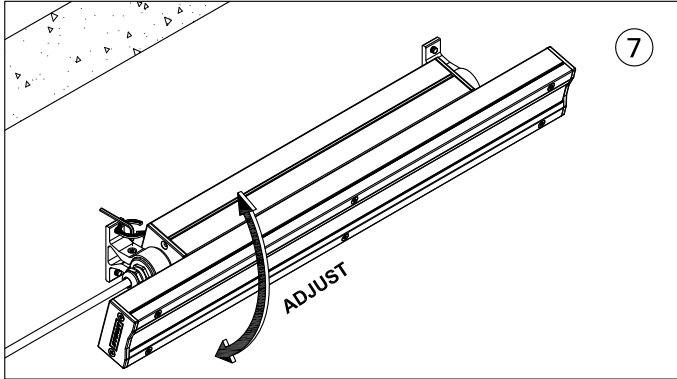
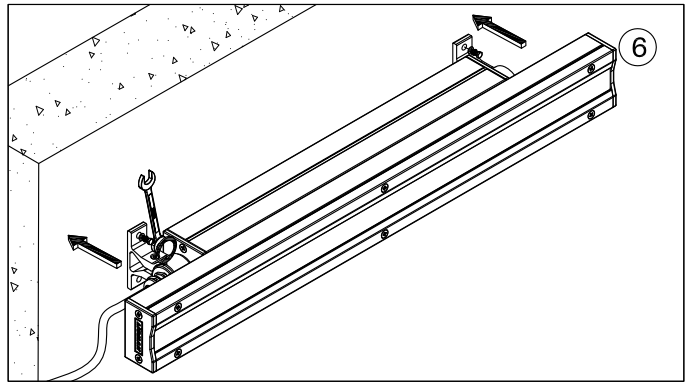
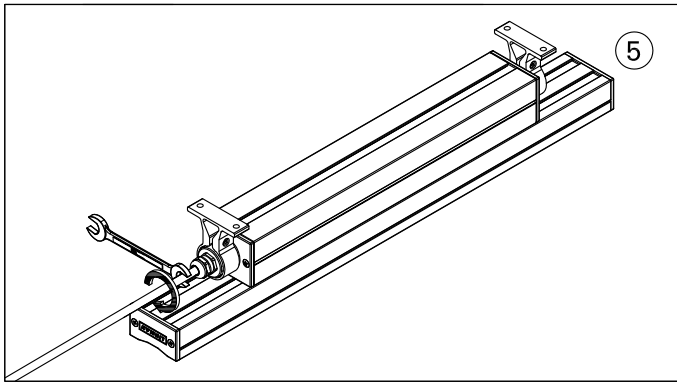
Notice to installer :

- 1.WIRING INSTRUCTIONS Warning : RISK OF FIRE AND ELECTRICAL SHOCK. : FIXTURE MUST BE INSTALLED BY A QUALIFIED ELECTRICIAN ONLY>FIXTURE IS INTENDED FOR INSTALLATION IN ACCORDANCE WITH THE NATIONAL ELECTRICAL CODE, LOCAL AND FEDERAL CODE SPECIFICATIONS. DISCONNECT POWER BEFORE SERVICING.**
- 2.This fixture has a VOLTAGE SPECIFIC BALLAST,Check that the supply voltage is the same as the installed ballast voltage.**

Ligman Lighting USA

7144 NW Progress Court, Hillsboro
Oregon, 97124, USA
Tel : 503 645 0500 | Fax : 503 645 8100

www.ligmanlightingusa.com

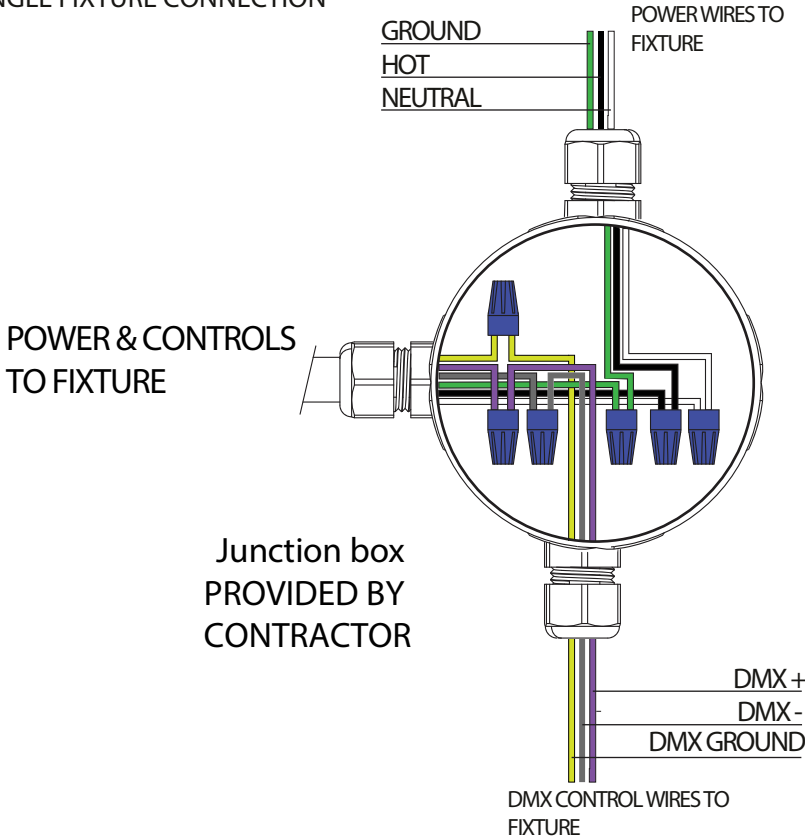


DMX WIRING DIAGRAM



GREEN	GROUND
BLACK	120/277 HOT
WHITE	NEUTRAL
YELLOW	DMX GROUND
PURPLE	DMX +
GREY	DMX -

SINGLE FIXTURE CONNECTION



FOR LOOPING TO MULTIPLE FIXTURES

