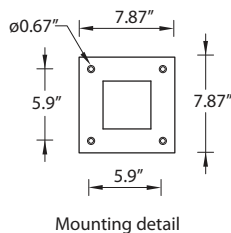
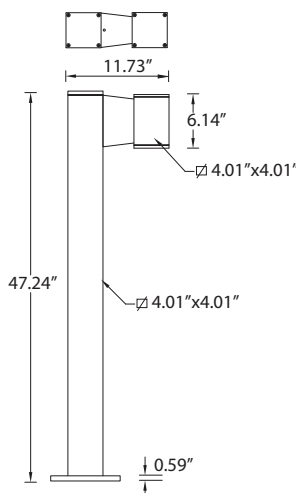


IP65 : Suitable for Wet Locations

IK08 : Impact Resistant (Vandal Resistant)



## UJE-10553

### Jet square bollard

The Jet's square shape integrated with square column provides downlight distribution with optimal visual comfort through great glare control fulfilling dark sky criteria. Lamp choices include line voltage halogen and T4 metal halide and LED with a selection of precision reflectors for optimum beam control as well as high efficiency. Long service life and vandal resistance are the further characteristics of this compact bollard.

Developed for lighting driveways, pathways and squares. Die-cast aluminum housing with high corrosion resistance. Stainless steel screws. Extruded aluminum column. Durable silicone rubber gasket and clear toughened glass. Housing is treated with a chemical chromatized protection before powder coating, ensuring high corrosion resistance. Integral control gear.


#### Physical Data

Length: 11.73"

Height: 47.24"

Weight: 16.3 lbs

#### Lamp

☐ T4 CMH 20w 

(For More Lamp options including LED, please Consult the Catalogue, Website or Contact The Ligman Lighting Factory)

#### Beam Angle (Please Specify)

☐ N - Narrow Beam: 6 Deg

☐ W - Wide Beam: 37 Deg

#### Voltage (Please Specify)

☐ 120V

☐ 277V

☐ Other \_\_\_\_\_

#### Options (Please Specify)

##### Color (Please Specify)

☐ 01-Black - RAL 9011

☐ 03-White - RAL 9003

☐ 05-Matt Silver - RAL 9006

☐ 06-Bronze - RAL 6014

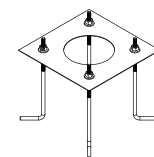
☐ 02- Dark Grey - RAL 7043

☐ 04 - Metallic Silver - RAL 9006

☐ 07- Custom - RAL \_\_\_\_\_



#### Mounting Accessories

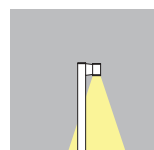


☐ Anchor Bolt Kit

☐ Specify custom Bollard height \_\_\_\_\_ ft

☐ F - Frosted Lens

☐ C - Clear Lens



Ordering Example : UJE- 10553 - T4 - 20w - N - 120v - Options

PROJECT: \_\_\_\_\_ DATE: \_\_\_\_\_

TYPE: \_\_\_\_\_ QUANTITY: \_\_\_\_\_ NOTE: \_\_\_\_\_

Ligman Lighting USA reserves the right to change specifications without prior notice, please contact factory for latest information.  
Due to the continual improvements in LED technology data and components may change without notice.