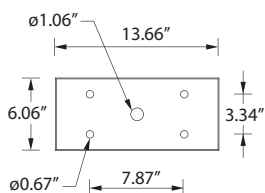
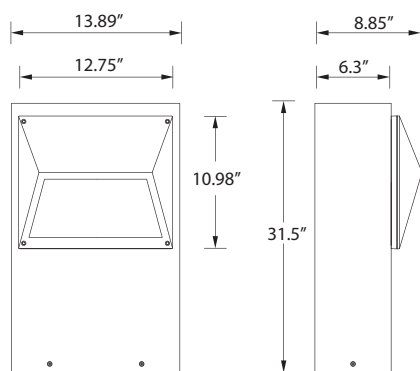


IP65 : Suitable for Wet Locations

IK08 : Impact Resistant (Vandal Resistant)



Mounting detail

UEC-10502

Eco Bollard

A range of rectangular bollards, with a regress lamp and excellent glare control. Suitable for illuminating pathways, driveways and squares. The spread lens provides a wide beam spread evenly illuminating up to 23ft of a pathway. Available with options of energy saving compact fluorescent lamps as well as, metal halide and high pressure sodium.

Low copper content die-cast aluminum housing with a high corrosion resistance. Stainless steel screws. Durable silicone rubber gasket and toughened linear spread lens. Housing is treated with a chemical chromatized protection before powder coating, ensuring high corrosion resistance. Integral control gear. Anodized high purity aluminum reflector.

Physical Data

Length: 13.89"

Height: 31.5"

Weight: 20.9 lbs

Lamp

☐ CFTR 2x26w

(For More Lamp options including LED, please Consult the Catalogue, Website or Contact The Ligman Lighting Factory)

Voltage (Please Specify)

☐ 120V
☐ 277V
☐ Other _____

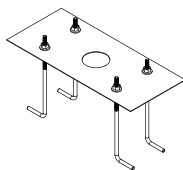
Options (Please Specify)

Color (Please Specify)

☐ 01-Black - RAL 9011 ☐ 02- Dark Grey - RAL 7043
☐ 03-White - RAL 9003 ☐ 04 - Metallic Silver - RAL 9006
☐ 05-Matt Silver - RAL 9006 ☐ 07- Custom - RAL _____
☐ 06-Bronze - RAL 6014



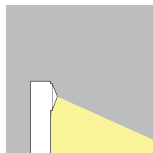
Mounting Accessories



☐ Anchor Bolt Kit

☐ Specify custom Bollard height _____ ft

☐ EMG - Emergency ballast



Ordering Example : UEC- 10502 - CFTR - 2x26 - 120v - Options

PROJECT: _____ DATE: _____

TYPE: _____ QUANTITY: _____ NOTE: _____

Ligman Lighting USA reserves the right to change specifications without prior notice, please contact factory for latest information.
Due to the continual improvements in LED technology data and components may change without notice.