

IP65 : Suitable for Wet Locations

IK10 : Impact Resistant (Vandal Resistant)

UTA-30752

Tango 14 square wall down light

Wall luminaires with a variety of reflectors and lamps with up and downward light distributions. Designed to illuminate the wall surface and for light accents on vertical surfaces.

Low copper content die-cast aluminum housing and aluminum frame with integral anti-glare baffles. Stainless steel screws. Durable silicone rubber gasket and clear toughened glass. Single cable entry. Housing is treated with a chemical chromated protection before powder coating, ensuring high corrosion resistance. Integral electronic control gear. Anodized high purity aluminum reflector.

For horizontally mounted single lamp configurations a one piece multi directional anodized high purity aluminum reflector is used for up and down light distribution. Two lamp configurations use individual reflectors for up and down light distributions. Mounting plate for 3" and 4" junction box is provided with the fixture.

Physical Data

Length: 11.57"

Height: 10.3"

Weight: 14.9 lbs

Lamp

☐ PMH-ED17 70w

☐ PMH-ED17 100w

(For More Lamp options including LED, please Consult the Catalogue, Website or Contact The Ligman Lighting Factory)

Voltage (Please Specify)

☐ 120V

☐ 277V

☐ Other _____

Options (Please Specify)

☐ F - Frosted Lens

☐ C - Clear Lens

Color (Please Specify)

☐ 01-Black - RAL 9011

☐ 02- Dark Grey - RAL 7043

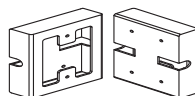
☐ 03-White - RAL 9003

☐ 04 - Metallic Silver - RAL 9006

☐ 05-Matt Silver - RAL 9006

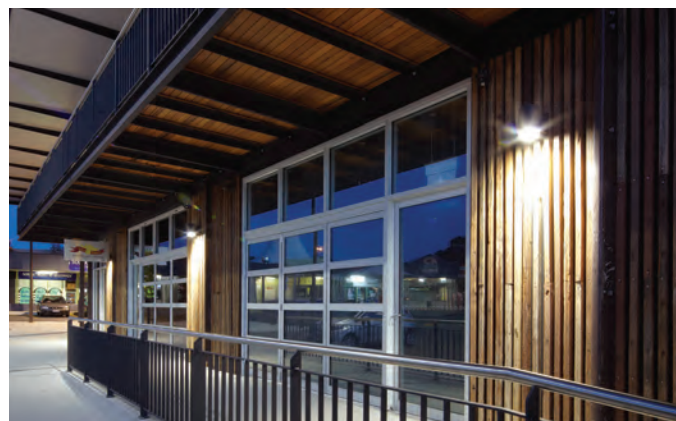
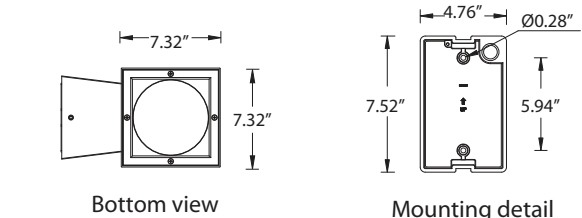
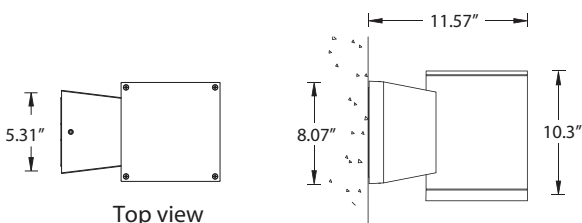
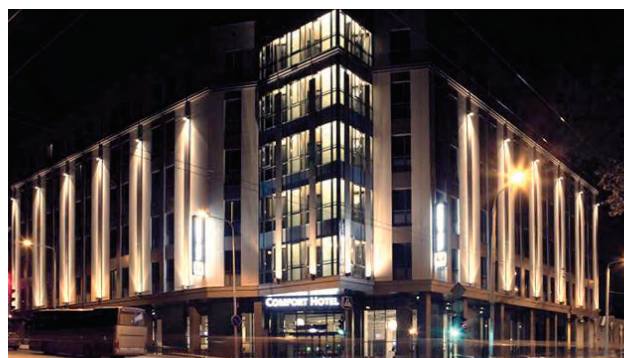
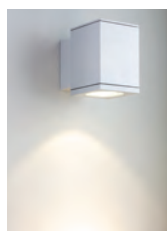
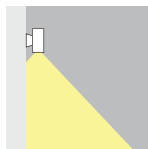
☐ 07- Custom - RAL _____

☐ 06-Bronze - RAL 6014



☐ SCE - Surface Conduit Entry Box - ☐ 1/2" Conduit ☐ 3/4" Conduit

☐ HGT- Specify Custom Height _____ft



Ordering Example : UTA - 30752 - PMH-70w - 120v - Options

PROJECT: _____ DATE: _____

TYPE: _____ QUANTITY: _____ NOTE: _____

Ligman Lighting USA reserves the right to change specifications without prior notice, please contact factory for latest information.
Due to the continual improvements in LED technology data and components may change without notice.