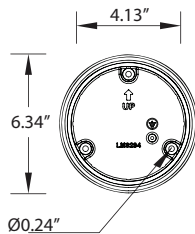
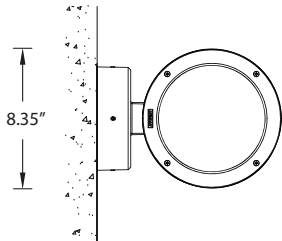
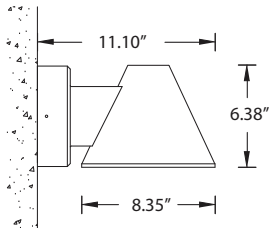
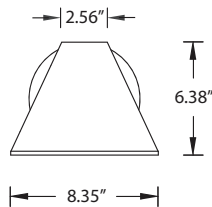
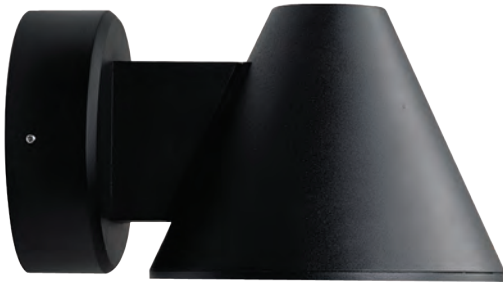


IP65 : Suitable for Wet Locations
IK09 : Impact Resistant (Vandal Resistant)



Mounting detail

UCI-30111 Cinati wall washer

A range of geometric shaped wall washer luminaires. Suitable for outdoor downlighting applications and up-lighting for indoor applications using energy saving compact fluorescent lamps. Low copper content corrosion resistant die-cast aluminum frame and body. Stainless steel screws. Durable silicone rubber gasket and impact resistant frosted toughened glass diffuser. The luminaire is treated with a chemical chromated protection before powder coating, ensuring high corrosion resistance. Integral electronic control gear. Fixture is mounted over a 3" octagonal junction box.

Physical Data

Diameter: 8.35"

Height: 6.38"

Weight: 6.3 lbs

Lamp

☐ CFTR 13w 

(For More Lamp options including LED, please Consult the Catalogue, Website or Contact The Ligman Lighting Factory)

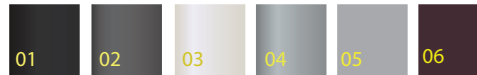
Voltage (Please Specify)

☐ 120V
☐ 277V
☐ Other _____

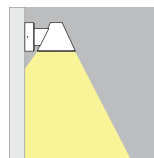
Options (Please Specify)

Color (Please Specify)

☐ 01-Black - RAL 9011 ☐ 02- Dark Grey - RAL 7043
☐ 03-White - RAL 9003 ☐ 04 - Metallic Silver - RAL 9006
☐ 05-Matt Silver - RAL 9006 ☐ 07- Custom - RAL _____
☐ 06-Bronze - RAL 6014



☐ SCE - Surface Conduit Entry - ☐ 1/2" ☐ 3/4"
☐ EMR - Remote Battery Pack



Ordering Example : UCI - 30111 - CFTR-13w - 120v - Options

PROJECT: _____ DATE: _____

TYPE: _____ QUANTITY: _____ NOTE: _____

Ligman Lighting USA reserves the right to change specifications without prior notice, please contact factory for latest information.
Due to the continual improvements in LED technology data and components may change without notice.