

IP54 : Suitable for Wet Locations

IK07 : Impact Resistant (Vandal Resistant)

UTR-96053

Triangle 5 single large streetlight type II

A large size triangle design street light luminaire using metal halide lamps or high pressure sodium lamps 70-150w. A high quality cut-off reflector design creates broad spread light distribution. Designed for lighting of private roadways, modern street suburbs and city centers.

Aluminum frame and body. Stainless steel screws and hardware. Durable silicone rubber gasket and impact resistant toughened glass diffuser with hinged aluminum frame for in-position lamp replacement. The luminaire is treated with a chemical chromated protection before powder coating, ensuring high corrosion resistance. Integral control gear. Anodized high purity aluminum reflector.

Physical Data

Length: 34.5"

Height: 26.0"

Weight: 45.8 lbs

Lamp

☐ PMH-T15 320w

(For More Lamp options including LED, please Consult the Catalogue, Website or Contact The Ligman Lighting Factory)

Voltage (Please Specify)

☐ 120V

☐ 277V

☐ Other _____

Options (Please Specify)

Color (Please Specify)

☐ 01-Black - RAL 9011

☐ 03-White - RAL 9003

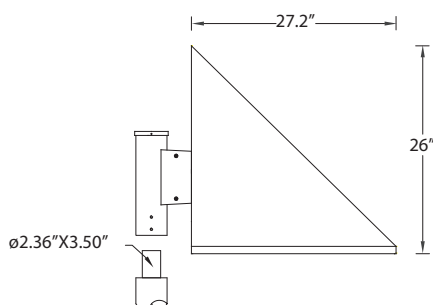
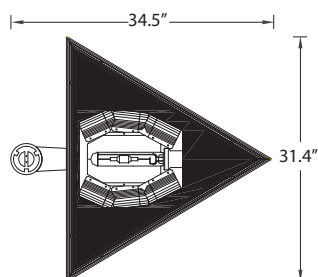
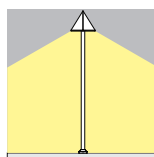
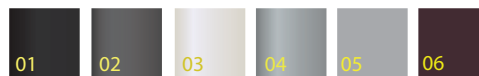
☐ 05-Matt Silver - RAL 9006

☐ 06-Bronze - RAL 6014

☐ 02- Dark Grey - RAL 7043

☐ 04 - Metallic Silver - RAL 9006

☐ 07- Custom - RAL _____



Ordering Example : UTR - 96053 - PMH-320w - 120v - Options

PROJECT: _____ DATE: _____

TYPE: _____ QUANTITY: _____ NOTE: _____

Ligman Lighting USA reserves the right to change specifications without prior notice, please contact factory for latest information.
Due to the continual improvements in LED technology data and components may change without notice.