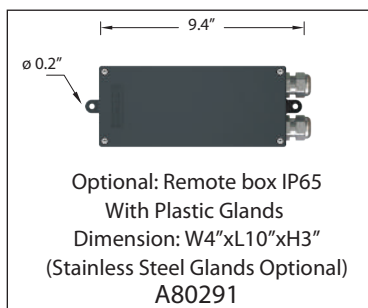
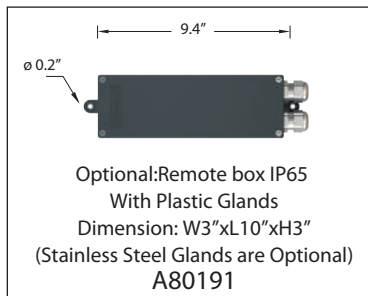
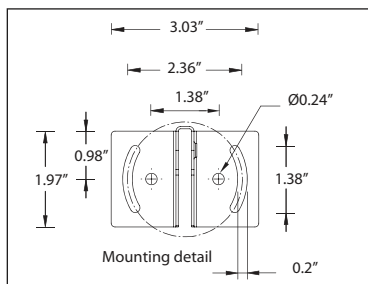
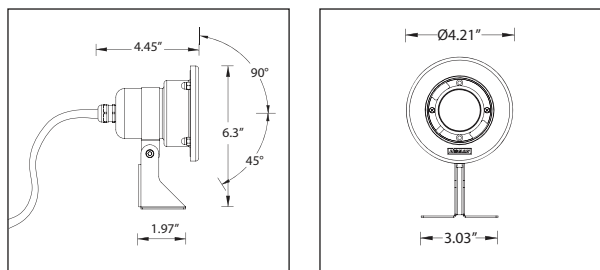


IP68 : Suitable for Underwater Installation



UAE-50171 Annet dia 4.2" - Underwater Lighting

A compact surface underwater projector for lighting small ponds, waterfalls and water jets of up to 7ft in height. The LED luminaires have features such as long life, limited maintenance and constant lifetime performance.

The floodlight must be submerged when operational. Stainless steel grade 316 body. Stainless steel screws. Cable entry PG.11 cable gland supplied with 7ft of Outdoor Submersible #18/3 SOOW 600V power cable. Durable silicone rubber gasket and clear toughened glass. Remote low voltage driver required to be installed by others. Luminaire is provided with electronic waterproof transformer for remote mounting. Waterproof transformer enclosure to be supplied by contractor. (see options below) For multiple fixtures on one transformer please contact factory for correct sizing. This luminaire is also available in low voltage 12v, LED and HP LED. Please refer to the Ligman website or contact the factory for more details.

The LED luminaires are available in the following colors: red, blue, amber, green and white 2700K, 3000K, 4000K. Consult factory for additional colors. Annet is suitable for underwater floor mounting. Remote electronic control gear, to be installed in a remote mounted water proof junction box supplied by contractor. Not to be used for swimming pool applications

Physical Data

Height: 6.3"
Diameter: 4.2"
Weight: 2.4 lbs

Lamp

☐ MR-16 FL 50w 12v

Voltage (Please Specify)

☐ 120V
☐ Other _____

IP65 Remote Box (Please Specify)

☐ A80191 - 3" wide remote box
☐ A80291 - 4" wide remote box
☐ Stainless Steel Glands for Remote Box

Color filters are accessories and must be ordered separately.

☐ Red ☐ Blue ☐ Amber ☐ Green
A60116 A60117 A60118 A60119



Ordering Example : UAE - 50171 - MR-16 - 50w - 120v - Options

PROJECT: _____ DATE: _____

TYPE: _____ QUANTITY: _____ NOTE: _____

Ligman Lighting USA reserves the right to change specifications without prior notice, please contact factory for latest information.
Due to the continual improvements in LED technology data and components may change without notice.