

Luminaire

Code UVK-30001-VW-W40
Name Vekter Medium wall washer 12 LED

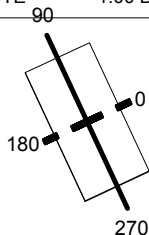
Measurem.

Code LIGMAN
Name Vekter Medium wall washer 12 LED

Luminaire Flux	1859.90 lm	Luminaire Power	20.40 W	Efficacy	91.17 lm/W	Efficiency	100.00%
Lamps Flux	1859.90 lm	Maximum value	1487.50 cd	Position	C=37.50 G=7.50	CG	Double Symmetrical
Rectangular Luminaire		Length	200 mm	Width	100 mm	Height	1 mm
Rectangular Luminous Area		Length	200 mm	Width	100 mm	Height	0 mm
Horizontal Luminous Area		0.020000 m2		Emitting area on Plane 180°		0.000000 m2	
Emitting area on Plane 0°		0.000000 m2		Emitting area on Plane 270°		0.000000 m2	
Emitting area on Plane 90°		0.000000 m2		Glare area at 76°		0.004838 m2	
Coordinate system		CG		Symmetry Type		Double Symmetrical	
Date		30-06-2015		Maximum Gamma Angle		90	
Measurement Distance		0.00		Measurement Flux		1859.90 lm	
Operator				Source voltage			
Temperature		25.00 °C		Source current			
Humidity		60.00 %		Photocell			
Notes							

Line	Code	Luminaire Lamps	Flux [lm]	Pow. [W]	Q.ty
	UVK-30001-VW-W40	Name 12 LED 4000K - 20.40 W	1859.90	20.40	1

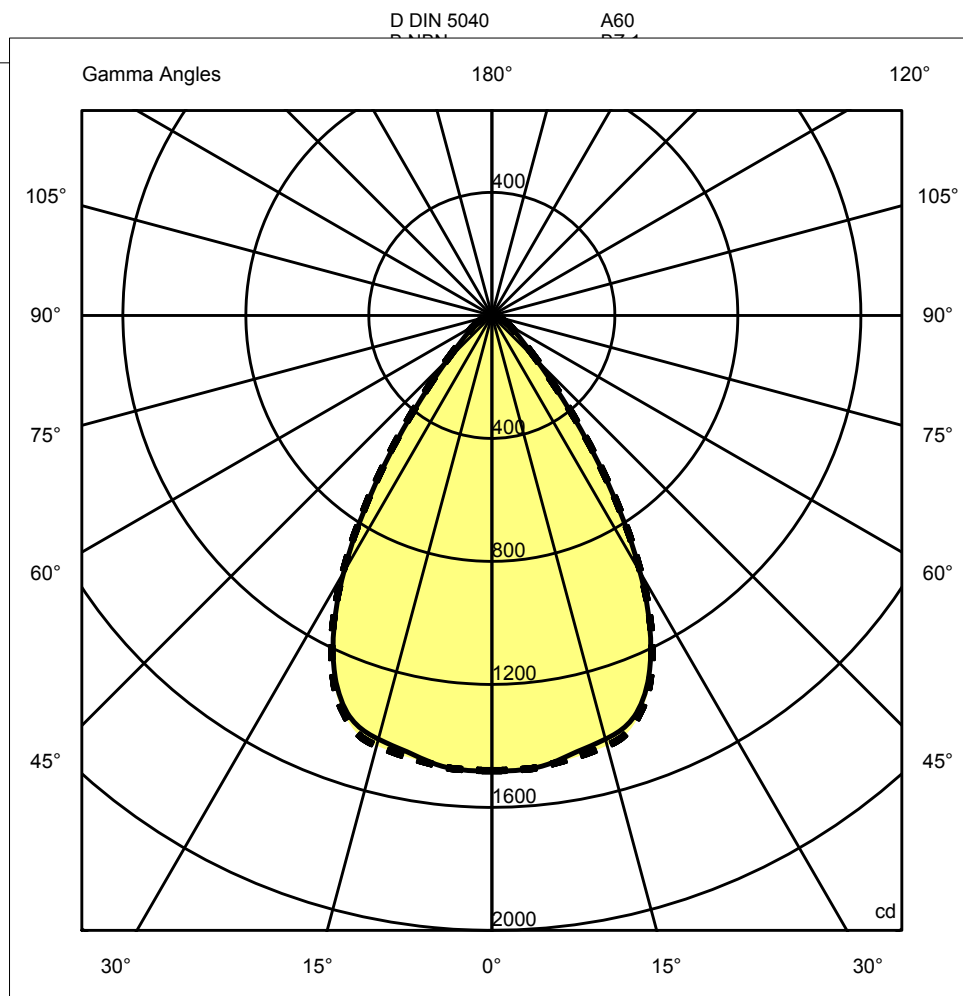
200mm x 100mm
C.I.E.
F UTE 84 96 99 100 100
1.00 B



C Halfplanes

180.0 - - - - - 0.0
270.0 - - - - - 90.0

ULOR 0.00 %
DLOR 100.00 %
RN 0.00 %



Luminaire

Code UVK-30001-VW-W40

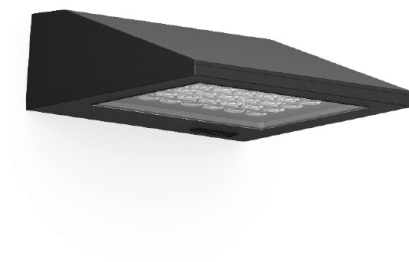
Name Vekter Medium wall washer 12 LED

Measurment.

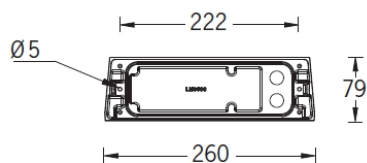
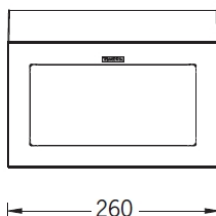
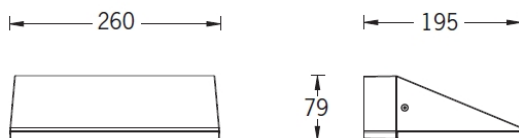
Code LIGMAN

Name Vekter Medium wall washer 12 LED

Luminaire Flux	1859.90 lm	Luminaire Power	20.40 W	Efficacy	91.17 lm/W	Efficiency	100.00%
Lamps Flux	1859.90 lm	Maximum value	1487.50 cd	Position	C=37.50 G=7.50	CG	Double Symmetrical



VEKTER 1



Mounting detail
Instructions de montage

Luminaire

Code UVK-30001-VW-W40
Name Vektor Medium wall washer 12 LED

Measurem.

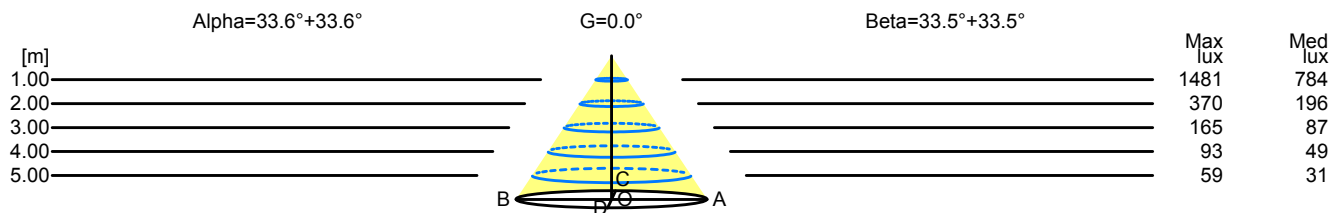
Code LIGMAN
Name Vektor Medium wall washer 12 LED

Luminaire Flux	1859.90 lm	Luminaire Power	20.40 W	Efficacy	91.17 lm/W	Efficiency	100.00%
Lamps Flux	1859.90 lm	Maximum value	1487.50 cd	Position	C=37.50 G=7.50	CG	Double Symmetrical

Width at 50.00 % of Max Intensity

H[m]	1.00	2.00	3.00	4.00	5.00	H[m]	1.00	2.00	3.00	4.00	5.00
OA	0.67	1.33	2.00	2.66	3.33	OC	0.66	1.32	1.98	2.65	3.31
OB	0.67	1.33	2.00	2.66	3.33	OD	0.66	1.32	1.98	2.65	3.31

	Luminous Intensities [cd]									
	0	5	15	25	35	45	55	65	75	85
OA	1480.40	1479.50	1448.30	1232.40	652.60	213.40	92.40	48.90	20.00	2.40
OB	1480.40	1479.50	1448.30	1232.40	652.60	213.40	92.40	48.90	20.00	2.40
OC	1480.40	1478.50	1426.30	1222.50	643.00	207.10	90.70	48.40	17.40	1.20
OD	1480.40	1478.50	1426.30	1222.50	643.00	207.10	90.70	48.40	17.40	1.20



H[m]	D[m]	Max lux	Med lux	Alpha=33.6°+33.6°	G=0.0	
1.00	1.33	1481	784			
2.00	2.66	370	196			
3.00	3.99	165	87			
4.00	5.32	93	49			
5.00	6.65	59	31			

H[m]	D[m]	Max lux	Med lux	Beta=33.5°+33.5°	G=0.0	
1.00	1.32	1481	784			
2.00	2.65	370	196			
3.00	3.97	165	87			
4.00	5.29	93	49			
5.00	6.62	59	31			

Luminaire

Code UVK-30001-VW-W40

Name Vekter Medium wall washer 12 LED

Measurem.

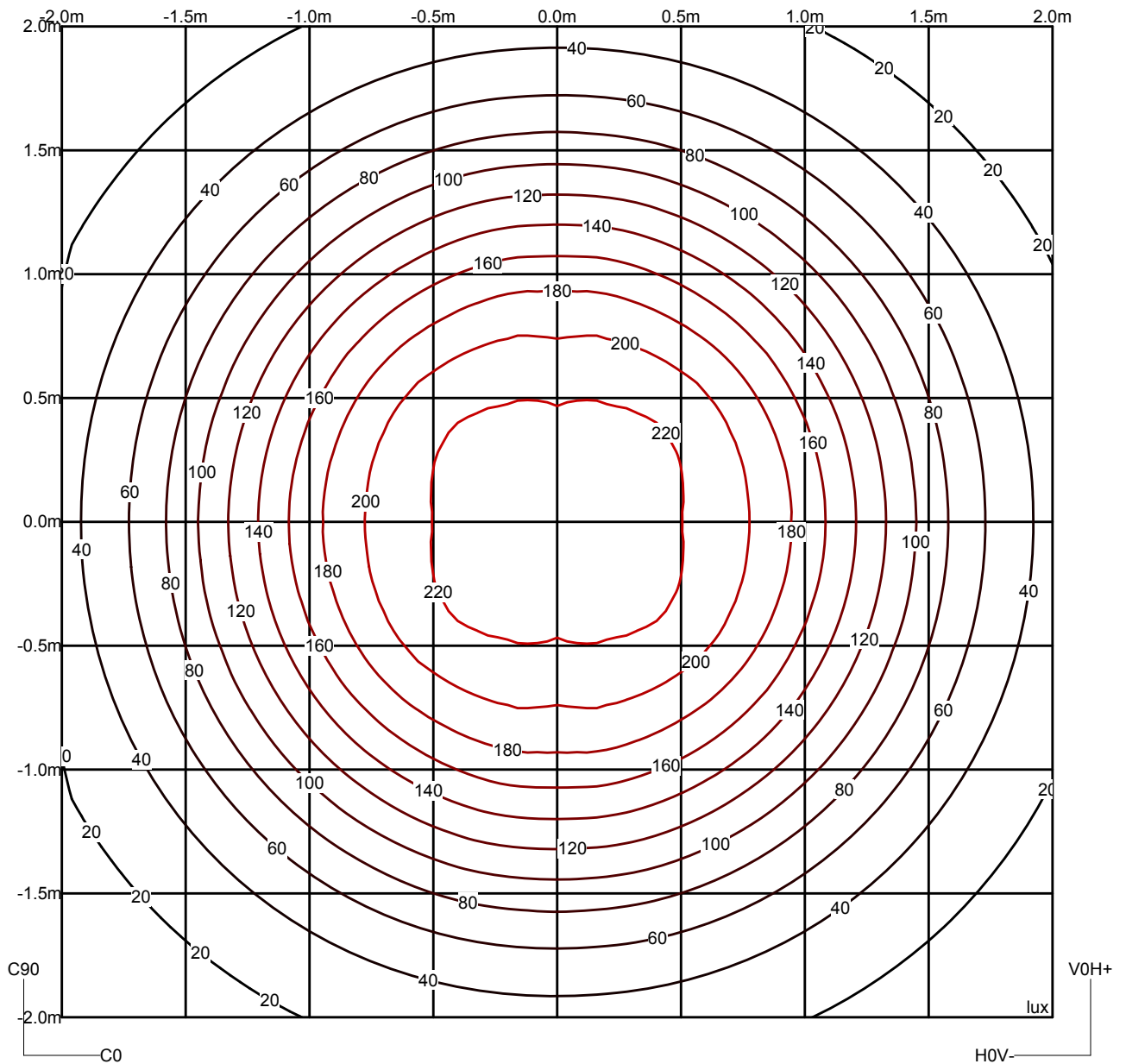
Code LIGMAN

Name Vekter Medium wall washer 12 LED

Luminaire Flux	1859.90 lm	Luminaire Power	20.40 W	Efficacy	91.17 lm/W	Efficiency	100.00%
Lamps Flux	1859.90 lm	Maximum value	1487.50 cd	Position	C=37.50 G=7.50	CG	Double Symmetrical

Isolux (Floor)

Luminaire position X=0.00m Y=0.00m Z=2.50m



Luminaire

Code UVK-30001-VW-W40

Name Vekter Medium wall washer 12 LED

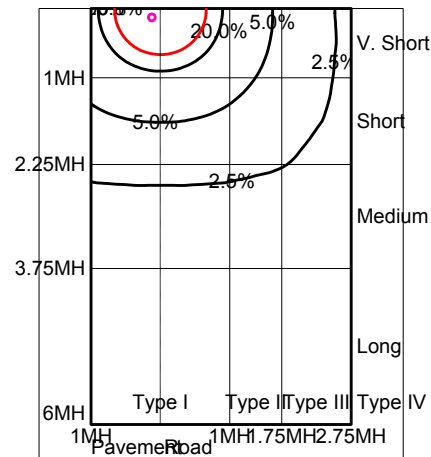
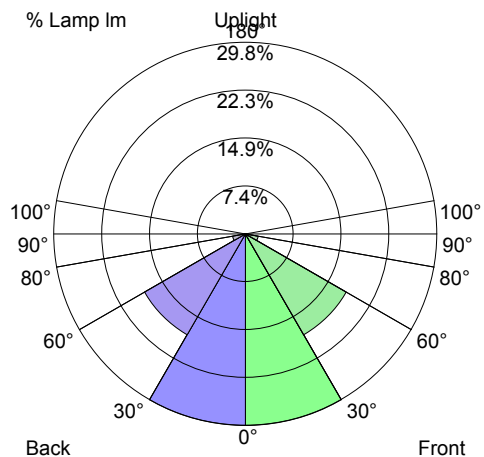
Measurem.

Code LIGMAN

Name Vekter Medium wall washer 12 LED

Luminaire Flux	1859.90 lm	Luminaire Power	20.40 W	Efficacy	91.17 lm/W	Efficiency	100.00%
Lamps Flux	1859.90 lm	Maximum value	1487.50 cd	Position	C=37.50 G=7.50	CG	Double Symmetrical

US ROAD STANDARDS



Luminaire Classification System (LCS)				
LCS Zone		Lumens	%Lamp	%Lum
FL	0° -- 30°	553.9 lm	29.8 %	29.8 %
FM	30° -- 60°	336.8 lm	18.1 %	18.1 %
FH	60° -- 80°	37.6 lm	2.0 %	2.0 %
FVH	80° -- 90°	1.7 lm	0.1 %	0.1 %
BL	0° -- 30°	553.9 lm	29.8 %	29.8 %
BM	30° -- 60°	336.8 lm	18.1 %	18.1 %
BH	60° -- 80°	37.6 lm	2.0 %	2.0 %
BVH	80° -- 90°	1.7 lm	0.1 %	0.1 %
UL	90° -- 100°	0.0 lm	0.0 %	0.0 %
UH	100° -- 180°	0.0 lm	0.0 %	0.0 %
TOTALS		1859.9 lm	100.0 %	100.0 %
BUG B2 U0 G0 Type V Very Short Quadrilateral Symmetry				