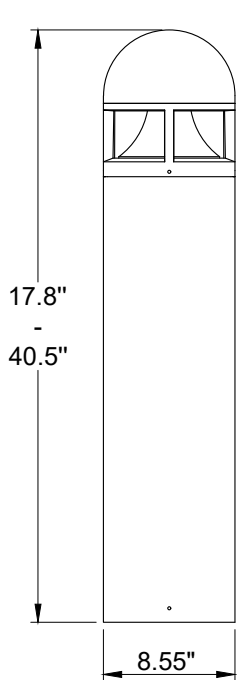


INSTALLATION AND SERVICE MANUAL

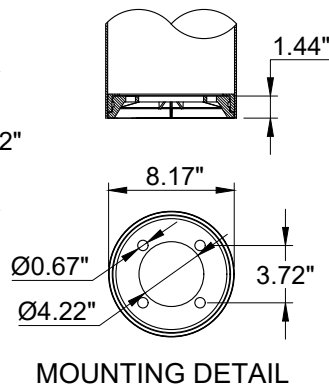
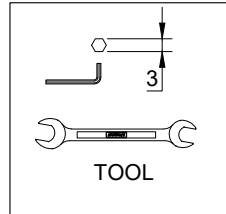
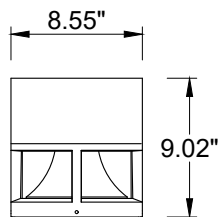
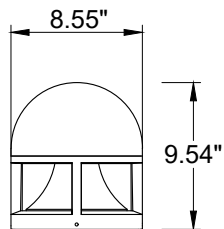
LIGMAN
LIGHTING USA

For installation of Columbus 1,2,3 Bollard. COB
Model. UCO-10117 , UCO-10127and UCO-70098.

Product drawing (dimensions)

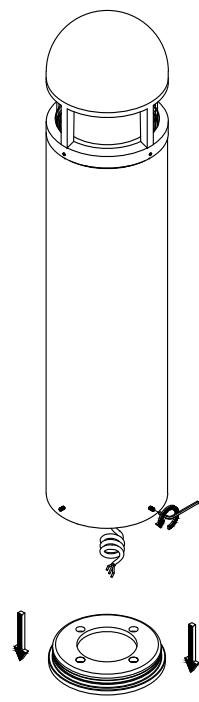


SUITABLE FOR WET LOCATIONS

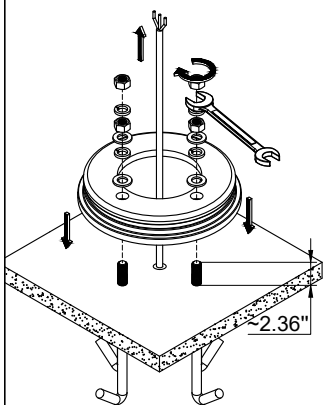


MOUNTING DETAIL

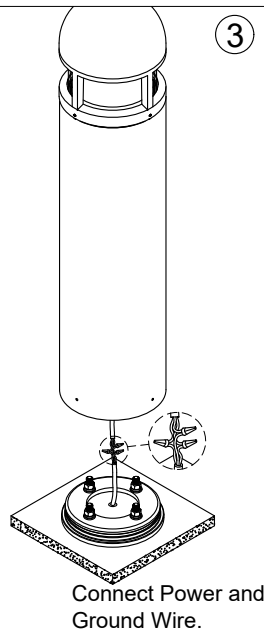
①



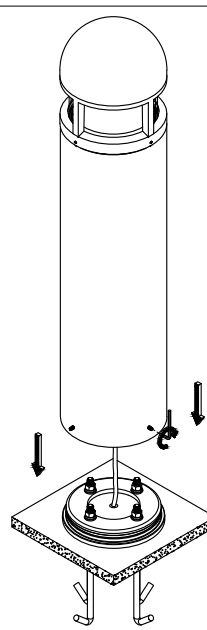
②



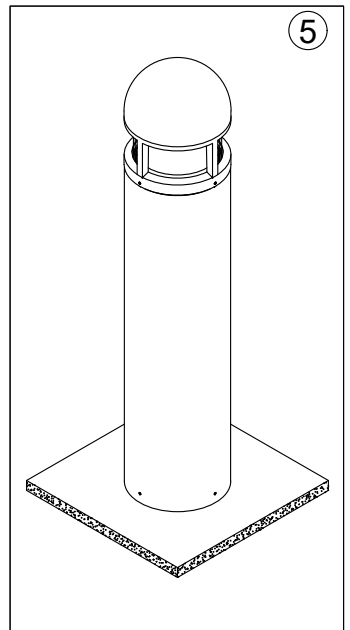
③



④



⑤



Notice to installer :

- 1.WIRING INSTRUCTIONS** Warning : RISK OF FIRE AND ELECTRICAL SHOCK. : FIXTURE MUST BE INSTALLED BY A QUALIFIED ELECTRICIAN ONLY>FIXTURE IS INTENDED FOR INSTALLATION IN ACCORDANCE WITH THE NATIONAL ELECTRICAL CODE, LOCAL AND FEDERAL CODE SPECIFICATIONS. DISCONNECT POWER BEFORE SERVICING.
- 2.This fixture has a VOLTAGE SPECIFIC BALLAST,Check that the supply voltage is the same as the installed ballast voltage.**

Ligman Lighting USA

7144 NE Progress Court, Hillsboro
Oregon, 97124, USA
Tel : 503 645 0500 | Fax : 503 645 8100

www.ligmanlightingusa.com

UCO-10117 09/02/24/REV.2
1/1

FM-TS-13-1/13-05-2563/Rev.6