

# UQA-21001

## Quantum 1 Single Side Cluster Column



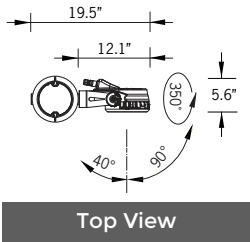
3x42w COB  
3x3937 Lumens

IP66  
Suitable for wet locations

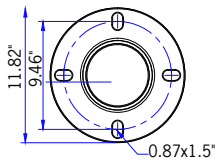
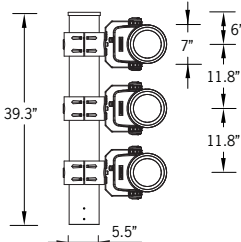
IK08  
Impact Resistant [Vandal Resistant]

Weight 81 lbs

**POLE NOT INCLUDED**



Top View



Mounting Detail

### Construction

**Aluminum**  
Less than 0.1% copper content – Marine Grade 6060 extruded & LM6 Aluminum High Pressure die casting provides excellent mechanical strength , clean detailed product lines and excellent heat dissipation.

**Pre paint**  
8 step decrease and phosphate process that includes deoxidizing and etching as well as a zinc and nickel phosphate process before product painting.

**Memory Retentive -Silicon Gasket**  
Provided with special injection molded "fit for purpose" long life high temperature memory retentive silicon gaskets. Maintains the gaskets exact profile and seal over years of use and compression.

**Thermal management**  
LM6 Aluminum is used for its excellent mechanical strength and thermal dissipation properties in low and high ambient temperatures. The superior thermal heat sink design by Ligman used in conjunction with the driver, controls thermals below critical temperature range to ensure maximum luminous flux output, as well as providing long LED service life and ensuring less than 10% lumen depreciation at 50,000 hours.

**Surge Suppression**  
Standard 10kv surge suppressor provided with all fixtures.

**BUG Rating**  
B3 - U1 - G0

**Finishing.**  
All Ligman products go through an extensive finishing process that includes fettling to improve paint adherence.

**Paint**  
UV Stabilized 4.9Mil thick powder coat paint and baked at 200 Deg C. This process ensures that Ligman products can withstand harsh environments. Rated for use in natatoriums.

**Inspired by Nature Finishes**  
The Inspired by nature Finishing is a unique system of decorative powder coating. Our metal decoration process can easily transform the appearance of metal or aluminum product into a wood grain finish.

This patented technology enables the simulation of wood grain, and even marble or granite finish through the use of decorative powder coating.

The wood grain finish is so realistic that it's almost undistinguishable from real wood, even from a close visual inspection. The system of coating permeates the entire thickness of the coat and as a result, the coating cannot be removed by normal rubbing, chipping, or scratching.

**The Coating Process**  
After pre-treatment the prepared parts are powder coated with a specially formulated polyurethane powder. This powder provides protection against wear, abrasion, impact and corrosion and acts as the relief base color for the finalized metal decoration.

The component is then wrapped with a sheet of non-porous film with the selected decoration pattern printed on it using special high temperature inks.

This printed film transfer is vacuum-sealed to the surface for a complete thermo print and then transferred into a customized oven. The oven transforms the ink into different forms within the paint layer before it becomes solid. Finally, the film is removed, and a vivid timber look on aluminum remains.

Wood grain coating can create beautiful wood-looking products of any sort. There are over 300 combinations of designs currently in use. Wood grains can be made with different colors, designs, etc.

Our powder coatings are certified for indoor and outdoor applications and are backed by a comprehensive warranty. These coatings rise to the highest conceivable standard of performance excellence and design innovation.

- Added Benefits
- Resistance to salt-acid room, accelerated aging
  - Boiling water, lime and condensed water resistant
  - Anti-Graffiti, Anti-Slip, Anti-Microbial, Anti-Scratch
  - Super durable (UV resistant)
  - TGIC free (non-toxic)

**Hardware**  
Provided Hardware is Marine grade 316 Stainless steel.

**Anti Seize Screw Holes**  
Tapped holes are infused with a special anti seize compound designed to prevent seizure of threaded connections, due to electrolysis from heat, corrosive atmospheres and moisture.

**Crystal Clear Low Iron Glass Lens**  
Provided with tempered, impact resistant crystal clear low iron glass ensuring no green glass tinge.

**Optics & LED**  
Precise optic design provides exceptional light control and precise distribution of light.  
LED CRI > 80

**Lumen - Maintenance Life**  
L80 /B10 at 50,000 hours (This means that at least 90% of the LED still achieve 80% of their original flux)

**Adjustable column technical projector cluster solution. Flexible technical project solutions in attractive cluster arrangements using the Stylish premium Quantum projectors.**

Quantum small size LED cluster projectors on light column. The high pressure die-cast housings have integrated heat sinks, as well as a internal waterproof control gear housing compartment. The mounting arm is attached to a ratcheting tilting adjustment that is lockable once the desired aiming position has been achieved. The floodlights can be aimed in different directions to highlight specific features or elements in the environment, as well as provide security when illuminating dark areas on campuses and parks. The luminaires are available with RGBW or static white light.

This fixture has been designed around powerful high performance LEDs and precision optics so that the luminaire can be used to illuminate various applications like parks and recreational areas, building facades, high multi-story surfaces and accents. The luminaire is provided with an integral driver and is available in Narrow, Medium, Wide and Elliptical light distributions. RGBW full color LED integration and static white with color temperatures of 2700K, 3000K, 3500K and 4000K. Cable gland entries on luminaire. Stainless steel fasteners in grade 316.

Optional louvers or visors are available upon request. Consult factory for available configurations. As a standard product this is offered in a 3 or 6 fixture configuration, however the fixture quantities, positions, watts & beam spread can be manufactured to suit designer's specifications. The Quantum Cluster adds to Ligman's comprehensive range of event pole cluster luminaires with different floodlight shapes, styles and wattages.

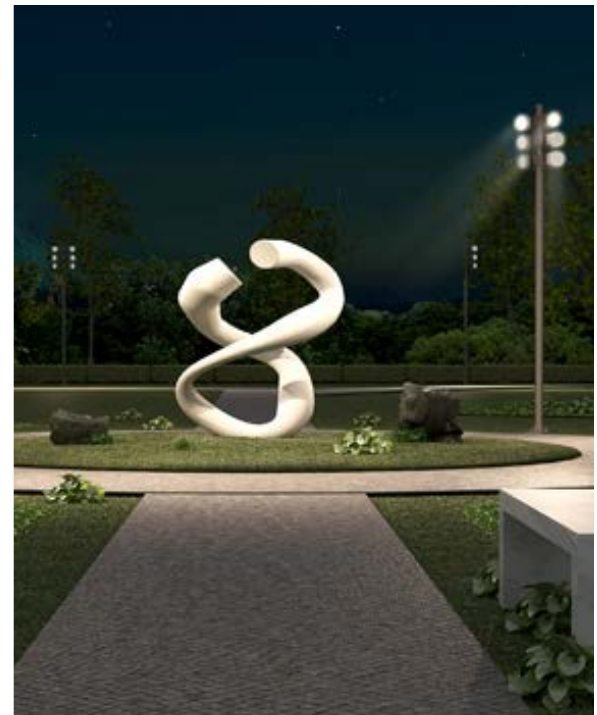
### Additional Options (Consult Factory For Pricing)



A51421  
Anti Glare Louvre



A20691  
Root Mount Kit



# UQA-21001

Quantum 1 Single Side Cluster Column

|                |  |             |  |
|----------------|--|-------------|--|
| <b>PROJECT</b> |  | <b>DATE</b> |  |
|----------------|--|-------------|--|

|                 |  |             |  |             |  |
|-----------------|--|-------------|--|-------------|--|
| <b>QUANTITY</b> |  | <b>TYPE</b> |  | <b>NOTE</b> |  |
|-----------------|--|-------------|--|-------------|--|

ORDERING EXAMPLE || UQA - 21001 - 3x42w LED - N - W30 - 02 - 120/277v

|                            |  |  |   |                             |  |
|----------------------------|--|--|---|-----------------------------|--|
| <b>UQA-21001</b>           |  |  |   |                             |  |
| <b>LAMP</b>                | <b>BEAM</b>                                      | <b>LED COLOR</b>   | <b>FINISH COLOR</b>   | <b>VOLTAGE</b>              |  |
| 3x42w COB<br>3x3937 Lumens | N - Narrow 25°<br>M - Medium 33°<br>W - Wide 47° | W27 - 2700K<br>W30 - 3000K<br>W35 - 3500K<br>W40 - 4000K | 01 - BLACK RAL 9011<br>02 - DARK GREY RAL 7043<br>03 - WHITE RAL 9003<br>04 - METALLIC SILVER RAL 9006<br>05 - MATTE SILVER RAL 9006<br>06 - LIGMAN BRONZE<br>07 - CUSTOM RAL | 120/277v<br>Other - Specify |  |

|  |  |  |  |
|--|--|--|--|
|  |  |  |  |
|--|--|--|--|

## ADDITIONAL OPTIONS

- DIM - 0-10v Dimming
- NAT - Natatorium Rated
- A51421 - Anti Glare Louvre
- GFCI - GFCI Box
- A20691 - Root Mount Kit

**INSPIRED BY NATURE FINISHES**

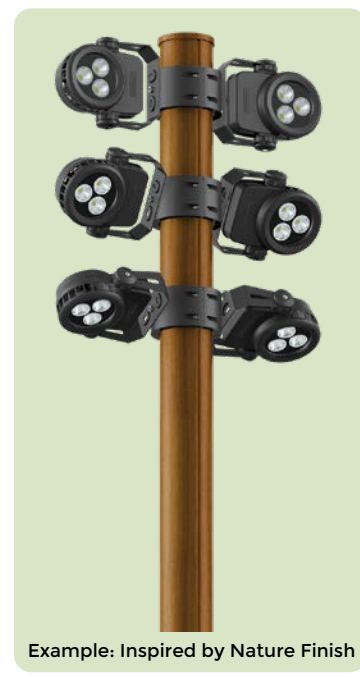
|                             |  |
|-----------------------------|--|
| SW01 - OAK FINISH           |  |
| SW02 - WALNUT FINISH        |  |
| SW03- PINE FINISH           |  |
| DF - DOUGLAS FIR FINISH     |  |
| CW - CHERRY WOOD FINISH     |  |
| NW - NATIONAL WALNUT FINISH |  |
| SU01 - CONCRETE FINISH      |  |
| SU02 - SOFTSCAPE FINISH     |  |
| SU03 - STONE FINISH         |  |
| SU04 - CORTEN FINISH        |  |

THERE IS AN ADDITIONAL COST FOR THESE FINISHES

## More Custom Finishes Available Upon Request

Consult factory for pricing and lead times

|        |          |        |            |
|--------|----------|--------|------------|
|        |          |        |            |
| Oak    | Cherry   | Beech  | Carbon     |
|        |          |        |            |
| Walnut | Chestnut | Bamboo | Galvanized |
|        |          |        |            |
| Pine   | Mahogany | Birch  | Steel      |



Example: Inspired by Nature Finish

# Quantum Product Family



Quantum 1

- UQA-50001-42w-3634lm
- UQA-50003-32w-2790lm
- UQA-50004-33w RGBW-1432lm



Quantum 2

- UQA-50011-104w-10611lm
- UQA-50013-76w-7175lm
- UQA-50015-77w RGBW-4296lm



Quantum 3

- UQA-50021-269w-27436lm
- UQA-50022-191w RGBW-12213lm



Quantum 1

- UQA-21001-3x42w-3x3937lm
- UQA-21003-3x32w-3x2790lm
- UQA-21004-3x33w RGBW-3x1432lm
- UQA-21011-6x42w-6x3937lm
- UQA-21013-6x32w-6x2790lm
- UQA-21014-6x33w RGBW-6x1432lm



Quantum 2

- UQA-21021-104w-10611lm
- UQA-21023-76w-7175lm
- UQA-21024-84w-8031lm
- UQA-21031-2x104w-2x10611lm
- UQA-21033-2x76w-2x7175lm
- UQA-21034-2x84w-2x8031lm



Quantum 2

- UQA-21025-77w-4296lm
- UQA-21035-2x77w-2x4296lm



Quantum 1 - GOBO

- UQA-50001-GOBO-44w-2508lm