

UMI-21051

Mic 3 Cluster Column



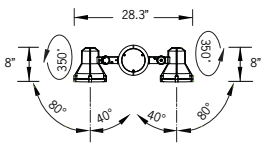
6x29w LED
6x3081 Lumens

IP65
Suitable for wet locations

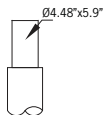
IK07
Impact Resistant [Vandal Resistant]

Weight 109.7 lbs

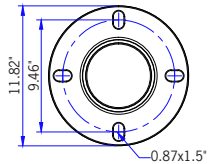
POLE NOT INCLUDED



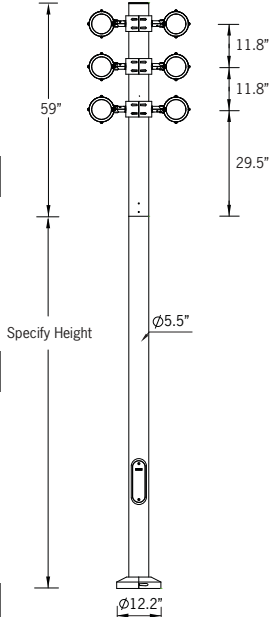
Top View



Tenon Detail



Mounting Detail



Construction

Aluminum
Less than 0.1% copper content – Marine Grade 6060 extruded & LM6 Aluminum High Pressure die casting provides excellent mechanical strength, clean detailed product lines and excellent heat dissipation.

Pre paint
8 step decrease and phosphate process that includes deoxidizing and etching as well as a zinc and nickel phosphate process before product painting.

Memory Retentive -Silicon Gasket
LM6 Aluminum is used for its excellent mechanical strength and thermal dissipation properties in low and high ambient temperatures. The superior thermal heat sink design by Ligman used in conjunction with the driver, controls thermals below critical temperature range to ensure maximum luminous flux output, as well as providing long LED service life and ensuring less than 10% lumen depreciation at 50,000 hours.

Thermal management
LM6 Aluminum is used for its excellent mechanical strength and thermal dissipation properties in low and high ambient temperatures. The superior thermal heat sink design by Ligman used in conjunction with the driver, controls thermals below critical temperature range to ensure maximum luminous flux output, as well as providing long LED service life and ensuring less than 10% lumen depreciation at 50,000 hours.

Surge Suppression
Standard 10kv surge suppressor provided with all fixtures.

BUG Rating
B5 - U5 - G5

Finishing
All Ligman products go through an extensive finishing process that includes fettling to improve paint adherence.

Paint
UV Stabilized 4.9Mil thick powder coat paint and baked at 200 Deg C. This process ensures that Ligman products can withstand harsh environments. Rated for use in natatoriums.

Inspired by Nature Finishes
The Inspired by nature Finishing is a unique system of decorative powder coating. Our metal decoration process can easily transform the appearance of metal or aluminum product into a wood grain finish.

This patented technology enables the simulation of wood grain, and even marble or granite finish through the use of decorative powder coating.

The wood grain finish is so realistic that it's almost undistinguishable from real wood, even from a close visual inspection. The system of coating permeates the entire thickness of the coat and as a result, the coating cannot be removed by normal rubbing, chipping, or scratching.

The Coating Process
After pre-treatment the prepared parts are powder coated with a specially formulated polyurethane powder. This powder provides protection against wear, abrasion, impact and corrosion and acts as the relief base color for the finalized metal decoration.

The component is then wrapped with a sheet of non-porous film with the selected decoration pattern printed on it using special high temperature inks.

This printed film transfer is vacuum-sealed to the surface for a complete thermo print and then transferred into a customized oven. The oven transforms the ink into different forms within the paint layer before it becomes solid. Finally, the film is removed, and a vivid timber look on aluminum remains.

Wood grain coating can create beautiful wood-looking products of any sort. There are over 300 combinations of designs currently in use. Wood grains can be made with different colors, designs, etc.

Our powder coatings are certified for indoor and outdoor applications and are backed by a comprehensive warranty. These coatings rise to the highest conceivable standard of performance excellence and design innovation.

- Added Benefits**
- Resistance to salt-acid room, accelerated aging
 - Boiling water, lime and condensed water resistant
 - Anti-Graffiti, Anti-Slip, Anti-Microbial, Anti-Scratch
 - Super durable (UV resistant)
 - TGIC free (non-toxic)

Hardware
Provided Hardware is Marine grade 316 Stainless steel.

Anti Seize Screw Holes
Tapped holes are infused with a special anti seize compound designed to prevent seizure of threaded connections, due to electrolysis from heat, corrosive atmospheres and moisture.

Crystal Clear Low Iron Glass Lens
Provided with tempered, impact resistant crystal clear low iron glass ensuring no green glass tinge.

Optics & LED
Precise optic design provides exceptional light control and precise distribution of light.
LED CRI > 80

Lumen - Maintenance Life
L80 /B10 at 50,000 hours (This means that at least 90% of the LED still achieve 80% of their original flux)

Adjustable column spotlight cluster solution.
Flexible project solutions in attractive cluster arrangements using the popular form-factor Mic series of spotlights.

A Decorative Event Column using a variety of LED floodlight wattages and beam spreads with a selection of accessories.

Ideal for precise lighting of facades, sculptures, signage and architectural details. The floodlights can be aimed in different directions to highlight specific features or elements in the environment, as well as provide security when illuminating dark areas on campuses and parks. This luminaire is configurable and allows the customer to specify Mic luminaires that vary in wattages from 20w, 30w, 40w & 50w luminaires to be mounted on the pole, as well as a variety of beam spreads to suit specific requirements. These fixtures can be individually wired and controlled.

These luminaires are available with a selection of optional attachments that include; anti-glare visors, anti-glare hoods, hexcell louvers, concentric ring louvre and linear spread lenses. To add color to the lighting design, we are also able to provide dichroic lenses. As a standard product this is offered in a 6 fixture configuration, however the fixture quantities, positions, watts & beam spread can be manufactured to suit designer's specifications. Please contact the factory for your specific floodlight requirements.

The Mic Cluster adds to Ligman's comprehensive range of event pole cluster luminaires with different floodlight shapes, styles and wattages. [see Ligman website for other floodlight options including RGBW]

Extruded aluminum or painted galvanized steel column manufactured to customer height requirements provided with anchor bolts and aluminum bolt cover. The Mic Floodlights are fully rotational and adjustable with a secure locking mechanism.

Additional Options (Consult Factory For Pricing)



A50231
Anti Glare Visor



A51631
Anti Glare Hood



LSL
Linear Spread Lens



CRL
Concentric Ring Louvre



A20691
Root Mount Kit



UMI-21051

Mic 3 Cluster Column

PROJECT		DATE	
----------------	--	-------------	--

QUANTITY		TYPE		NOTE	
-----------------	--	-------------	--	-------------	--

ORDERING EXAMPLE || UMI - 21051 - 6x29w - N - W30 - 02 - 120/277v - Options

UMI-21051					
LAMP	BEAM	LED COLOR	FINISH COLOR	VOLTAGE	
6x29w LED 6x3081 Lumens	N - Narrow 16° M - Medium 28° W - Wide 41°	W27 - 2700K W30 - 3000K W35 - 3500K W40 - 4000K	01 - BLACK RAL 9011 02 - DARK GREY RAL 7043 03 - WHITE RAL 9003 04 - METALLIC SILVER RAL 9006 05 - MATTE SILVER RAL 9006 06 - LIGMAN BRONZE 07 - CUSTOM RAL	120/277v Other - Specify	

--	--	--	--

ADDITIONAL OPTIONS

- A50231 - Anti Glare Visor
- A51631 - Anti Glare Hood
- CRL - Concentric Ring Louvre
- NAT - Natatorium Rated
- AMB - Turtle Friendly Amber LED
- LSL - Linear Spread Louvre
- HEX - Hexcell Louvre
- F - Frosted Lens
- DIM - 0-10v Dimming

INSPIRED BY NATURE FINISHES

SW01 - OAK FINISH	
SW02 - WALNUT FINISH	
SW03 - PINE FINISH	
DF - DOUGLAS FIR FINISH	
CW - CHERRY WOOD FINISH	
NW - NATIONAL WALNUT FINISH	
SU01 - CONCRETE FINISH	
SU02 - SOFTSCAPE FINISH	
SU03 - STONE FINISH	
SU04 - CORTEN FINISH	

THERE IS AN ADDITIONAL COST FOR THESE FINISHES

More Custom Finishes Available Upon Request

Consult factory for pricing and lead times

Oak	Cherry	Beech	Carbon
Walnut	Chestnut	Bamboo	Galvanized
Pine	Mahogany	Birch	Steel



Example: Inspired by Nature Finish

Mic Product Family



Mic 1

- UMI-50371-13w-1099lm
- UMI-50373-20w-2064lm
- UMI-50375-21w-1798lm



Mic 2

- UMI-50411-13w-1099lm
- UMI-50413-20w-2064lm
- UMI-50415-21w-1798lm



Mic 3

- UMI-50381-29w-3081lm
- UMI-50383-38w-4265lm
- UMI-50384-33w-RCBW-1536lm
- UMI-50385-33w-3230lm



Mic 4

- UMI-50421-29w-3081lm
- UMI-50423-38w-4265lm
- UMI-50425-33w-3230lm



Mic 5

- UMI-50391-38w-4272lm
- UMI-50393-51w-6140lm



Mic 6

- UMI-50431-38w-4272lm
- UMI-50433-51w-6140lm



Mic 7

- UMI-50441-13w-1099lm
- UMI-50443-20w-2064lm
- UMI-50445-21w-1798lm



Mic 8

- UMI-50451-29w-3081lm
- UMI-50453-38w-4265lm
- UMI-50455-33w-3230lm



Mic 9

- UMI-50461-38w-4272lm
- UMI-50463-51w-6140lm



Mic 3

- UMI-21051-6x29w-6x3081lm
- UMI-21052-6x38w-6x4144lm
- UMI-21053-6x33w-6x3230lm



Mic 3

- UMI-21111-38w-2403lm



Mic 3

- UMI-21071-2x38w-2x2403lm